

ROADS

Service

EASTERN DIVISION

Report to

BELFAST
CITY
COUNCIL

Spring 2012



CONTENTS	PAGE
FOREWORD BY DIVISIONAL ROADS MANAGER	5
1.0 INTRODUCTION	7
2.0 STRATEGIC ROAD IMPROVEMENTS	15
2.1 York Street Interchange Scheme	16
2.2 A2 Sydenham Bypass Improvement Scheme	17
3.0 NETWORK DEVELOPMENT	19
3.1 Major Works	20
3.2 Minor Works	21
3.3 Route Improvement Studies	21
3.4 Bus Measures	21
3.5 Maintenance of Structures	22
3.6 Belfast On The Move	26
4.0 NETWORK TRAFFIC AND STREET LIGHTING	29
4.1 Collision Remedial Schemes	30
4.2 Traffic Schemes	30
4.3 Pedestrian Measures	31
4.4 Safer Routes to School	34
4.5 Traffic Signs	35
4.6 Carriageway Markings	37
4.7 Legislation	39
4.8 Disabled Parking Bays	40
4.9 Street Lighting	43
4.10 Traffic Calming	45
4.11 Cycle Measures	47
4.12 Car Parking	49
4.13 Residents' Parking	51
5.0 NETWORK TRANSPORT TELEMATICS	53
5.1 Network Transport Telematics	54
6.0 NETWORK MAINTENANCE	59
6.1 Carriageway Resurfacing	60
6.2 Footway Resurfacing	63
6.3 Drainage	65
6.4 Carriageway Refurbishment	66
6.5 Surface Dressings	67
6.6 Public Realm	68
6.7 Liaison with Utilities	68
7.0 NETWORK PLANNING	71
7.1 Adoptions	72
7.2 Planning Applications	75

FOREWORD BY THE DIVISIONAL ROADS MANAGER



John Irvine
Divisional Roads Manager



Bertie Ellison
Deputy Divisional Roads Manager

Members of Council

I am very pleased to present this report to Belfast City Council. The report highlights the work completed in the City last year (2011/12) and it outlines what we intend to do during this financial year (2012/13).

2011/12 was a very busy year indeed for all staff within Roads Service. A record breaking budget of some £ 96M for structural maintenance ensured a considerable number of roads and footways were resurfaced or refurbished. Within Eastern Division we spent £18.1M on this activity, which amounted to some 36% of our total Divisional budget. The report outlines the number of schemes completed. Of particular note were Balmoral Avenue and Stockmans Lane in the south of the City, Belmont Road Roundabout and Ravenhill Road in the East, and Crumlin Road and Dunbar Link in the North.

The winter of 2011/12 was much milder than the previous two occasions, but we still treated the main salted route network on 51 occasions. The cost of this mild winter was still of the order of £805k – although greatly reduced from the £1.59M spent in 2010/11.

I am very pleased with the way we have worked with Belfast City Council to put arrangements in place to deal with more severe weather conditions.

Indeed, working arrangements with other Government Departments and Belfast City Council have been excellent, particularly in relation to our work on the Belfast on the Move project and in co-ordinating traffic arrangements for many of the major events held in the City. We have also worked closely with Council and the general public to take forward our major schemes at York Street and the Sydenham By-Pass. You can read about progress on all our schemes in this report.

For 2011/12 the Division, as a whole, received 5969 written enquires with 96.7% of these responded to within the 15 day timescale. In addition, 184 written complaints were received during this period and 95.1% of these were responded to within the set deadline.

Another important aspect of our work is the considerable amount of Routine Maintenance work which must be undertaken. This includes cutting grass, spraying weeds, clearing gullies, repairing defects and potholes that appear on our road surfaces. Last year we carried out some 69,300 pothole repairs in Eastern Division, achieving 95% rating against our target repair timeframe. The cost of this work was £5.6million.

As you will be aware, the Executive, earlier this year, committed to the implementation of a number of strategic roads. Within Eastern Division our team will be key to the delivery of the £59M A2 scheme at Shore Road, Greenisland. Procurement work is progressing on this with construction due to commence early 2013. The other major strategic schemes across NI to be taken forward are the A5 and A8.

The high capital spend on major schemes impacts on the finance that will be available for other work. At this stage, the budget for structural maintenance across NI is £25M, a considerable reduction from last year's outturn figures of £96M. Similar pressures on Network Development, Local Traffic and Safety Measures and Street Lighting budgets are also envisaged.

We will, however, bid for additional money in year to enhance our proposed programme of works.

I look forward to our meeting on 28th May.

John Irvine
Divisional Roads Manager
Eastern Division
'Hydebank'
4 Hospital Road
Belfast BT8 8JL

1.0 INTRODUCTION

The Eastern Division is one of 4 Divisions within Roads Service. It spans the local Council areas of Belfast, Carrickfergus, Castlereagh, Lisburn, Newtownabbey and North Down. (See Fig.1 below)

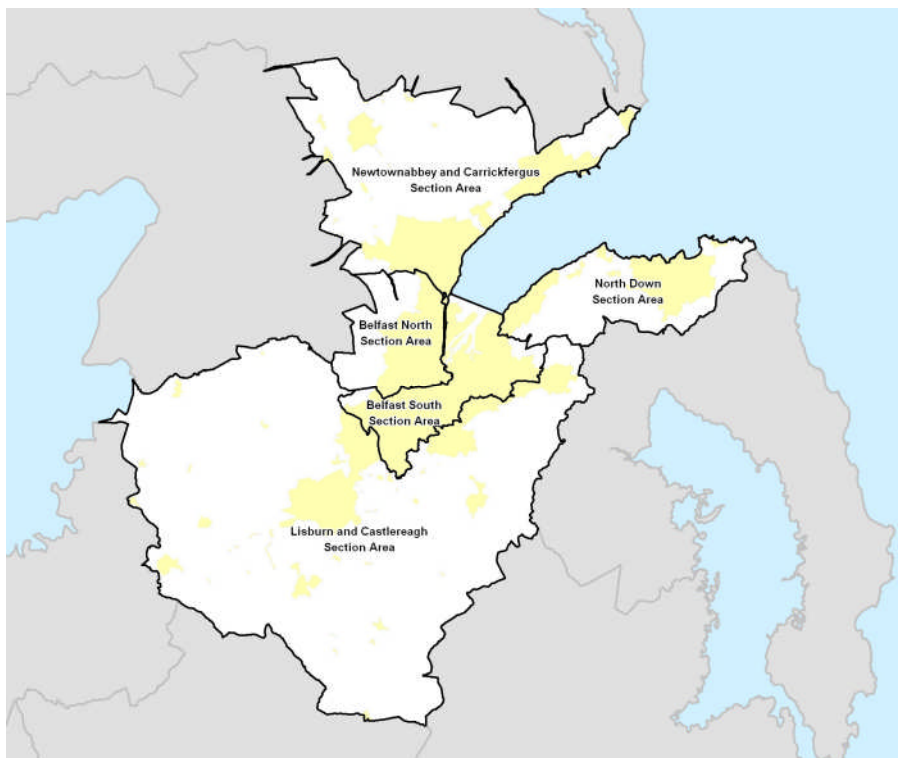


Figure 1 – Eastern Division and Council Areas

Eastern Division is part of the overall structure of Roads Service (see figure 2 below) which is based on separate business units for those who order services (clients) and for those who provide services (Roads Service Consultancy and Roads Service Direct).

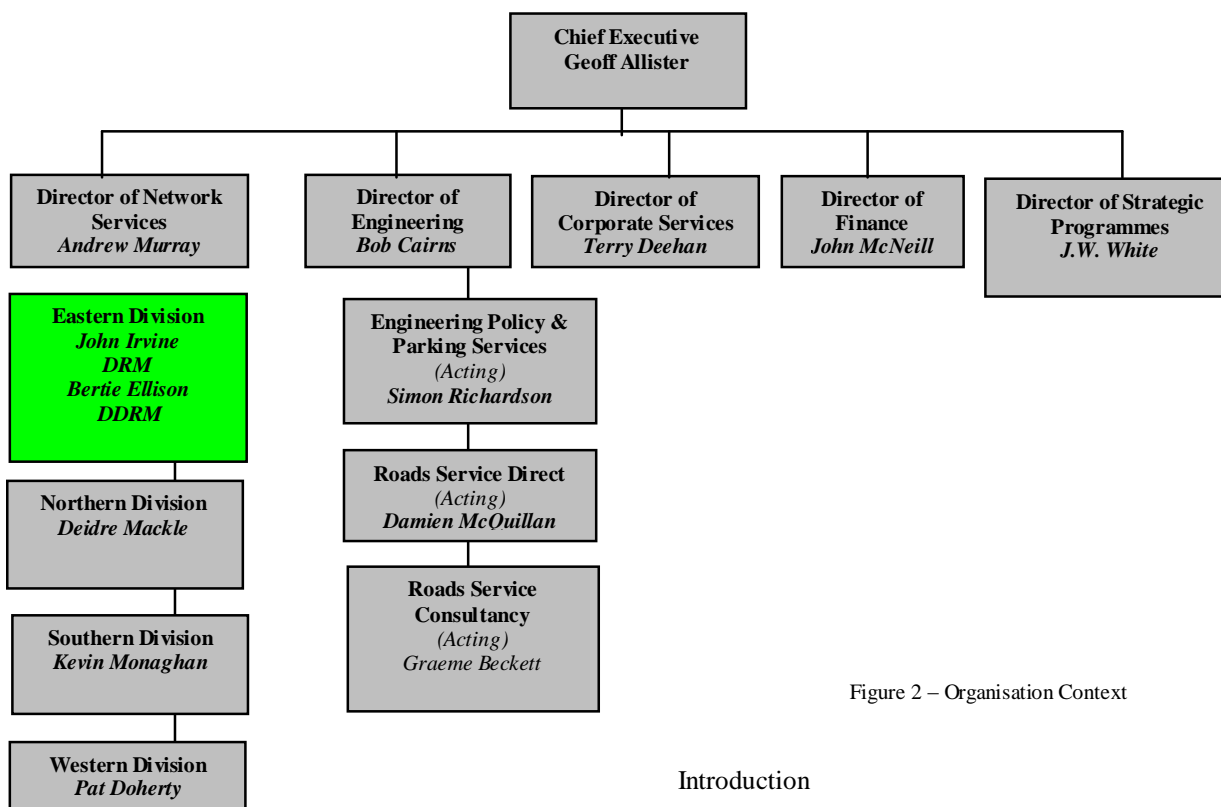


Figure 2 – Organisation Context

Eastern Division Management Structure



John Irvine (9025 3001) john.irvine@drdni.gov.uk
Divisional Roads Manager



Norman Chambers (9025 3006) norman.chambers@drdni.gov.uk

Network Traffic and Street Lighting

Traffic Management minor improvements, pedestrian priority, traffic orders, signing, collision remedial schemes, Street Lighting, resident and disabled parking, car parks and pay and display spaces, cycling and traffic calming.



Philip Robinson (9025 3080) philip.robinson@drdni.gov.uk

Network Planning

Development Control, Private Streets and Transport Assessments



Brian Maxwell (9025 4500) brian.maxwell@drdni.gov.uk

Network Transport Telematics

Traffic signal control, operation of the Traffic Information and Control Centre, Traffic and travel information and European projects INSTANT and STREETWISE.



Attracta Tremers (9025 3036) attracta.tremers@drdni.gov.uk

Business Support

Financial control, land acquisition and disposal, retained human resources, building management and office supplies.



Bertie Ellison (9025 3002) bertie.ellison@drdni.gov.uk
Deputy Divisional Roads Manager



Roy Spiers (9025 3129) roy.spiers@drdni.gov.uk

Strategic Route Improvements

Developing and progressing Strategic Highway Improvements within Eastern Division.



Stephen Pollock (9025 3071) stephen.pollock@drdni.gov.uk

Network Development

Major and minor works programme, structures, bus priority, 'Park and Ride', BMTP, forward planning, scheme financial control and programming, council reports, business plan and communications.

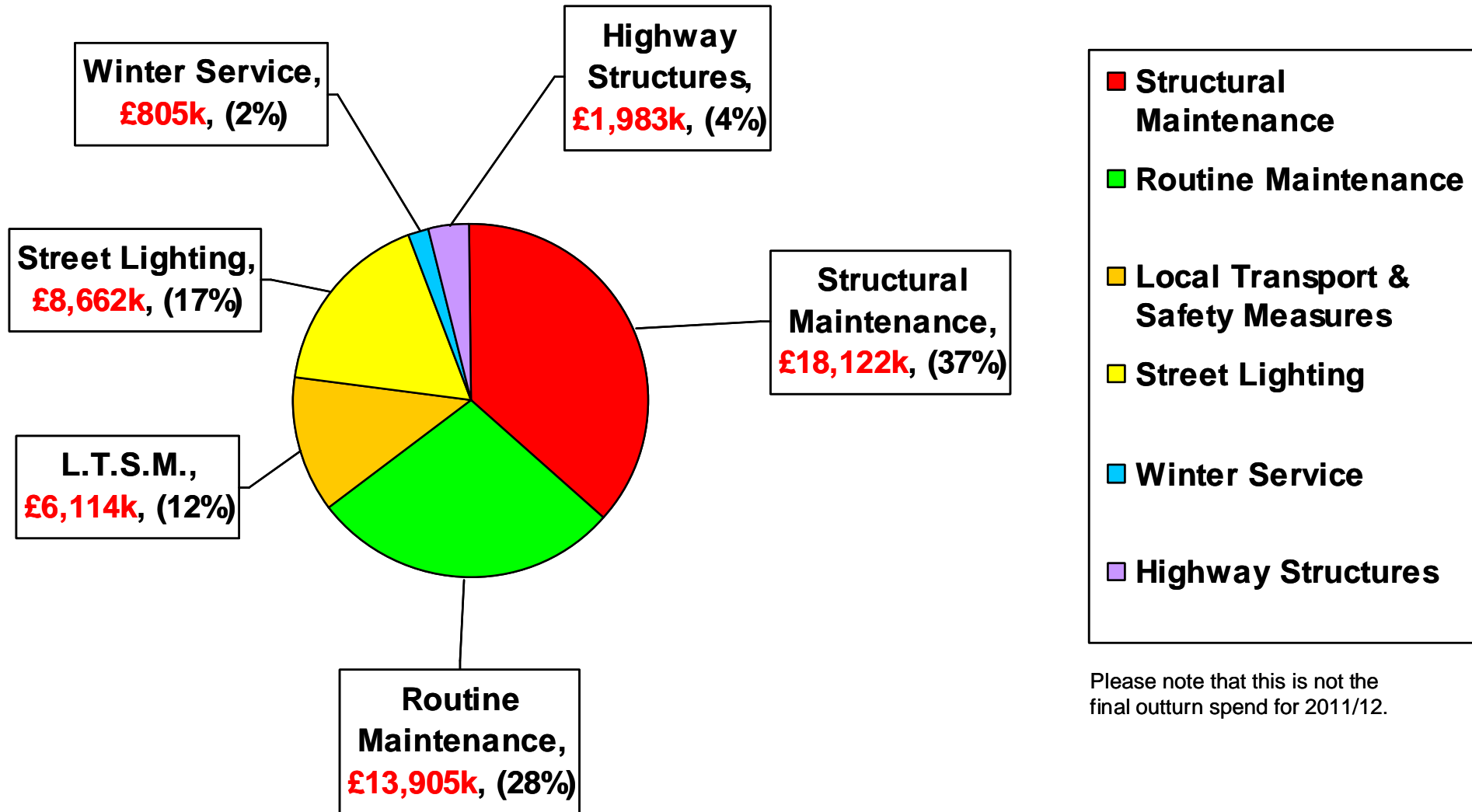


Colin Sykes (9025 3111) colin.sykes@drdni.gov.uk

Network Maintenance

Maintenance of adopted roads and footways including inspections, resurfacing, drainage, grass cutting and weed control, winter gritting and liaison with the utility companies.

Eastern Division 2011/12 Expenditure Profile (up to end of March 2012)



Belfast City Council area – Key Statistics

Roads infrastructure	Eastern Division	Belfast City Council area
Length of public road (km)	3549	876
Length of footway (km)	3849	1518
Number of bridges	667	161
Number of street lights	97128	35029
Number of car parks	78	35
Number of car parking spaces	5809	2685

WHAT WE DO

Maintaining the road network

Structural maintenance

Maintaining the network in a safe and serviceable condition remains one of our highest priorities.

Structural maintenance includes:

- The resurfacing and surface dressing of roads and footways
- The repair of surface defects, such as potholes and broken flagstones
- The replacement and repair of road gullies, culverts and manholes

Within the Eastern Division area in 2011/12 we:

- Invested over £18 million on structural maintenance
- resurfaced 143 lane kilometres of the road network
- resurfaced 59 km of footways

Condition of the network

Monitoring the condition of our road network is an essential part of planning maintenance work and, in order to detect deterioration at an early stage, we undertake a number of annual road condition surveys using specialist vehicles to measure the strength, surface condition and skidding resistance of our roads.

In 2011 70.9% of the motorway and trunk road network had a residual life of more than 5 years compared to a target of 70%. The information from the survey gives us an indication of areas of the road network which require further investigation and are likely to require maintenance.

Routine maintenance

Routine maintenance is important, both to enhance user safety and to help prevent more significant and costly maintenance problems building up over time.

In Eastern Division during 2011/12 we:

- invested around £10.6 million repairing surface defects, replacing road markings, cutting grass verges to maintain visibility, emptying gullies and maintaining or replacing safety barriers, verges and fences.
- repaired 69,300 road defects following inspections. 94% of serious road surface defects repaired or made safe by the end of the day following the day of detection

Managing the road

We manage the road network to promote its safety and efficient operation. We have continued to make use of the latest technology and traffic management techniques to improve road safety, provide facilities for all road users, and effectively manage the network. This has included:

- Monitoring and management of traffic signal timings
- Responding to at least 97% of urgent traffic signal faults within 24 hours
- The use and extension of traffic control and monitoring systems
- The promotion and introduction of Puffin crossings
- The provision and management of motorway control systems
- The provision of accurate and reliable traffic information to the public

Within Eastern Division during 2011/12 we:

- Further improved the operation of the mandatory variable speed limit system on M1/Westlink and carried out enhancements to the Motorway Control system.
- Incorporated priority for buses into 5 traffic signalled junctions
- Included a further 10 pelicans in the system which remotely monitors traffic signal equipment for faults.
- Provided pre-trip information on the trafficwatch website, www.trafficwatchni.com, radio broadcasts and our traffic information telephone line 08457123321.

Winter Service

The aim of winter service is to help, as far as possible, main road traffic to move safely and freely in wintry conditions by spreading salt at the most effective times.

Whilst this winter has been relatively mild, last year was the most severe for almost 50 years. To accommodate these challenges, Eastern Division, has a fleet of 22 gritters and over 100 personnel were available to salt approximately 1,236km of main roads.

There were approximately 51 call-outs this year, using around 8,534 tonnes of salt, at a cost of just under £16k per call-out to treat all roads on the salting schedule. We met our target of completing at least 75% of winter salting actions by 07.30 hours.

Our total winter service expenditure was £805k.

Emergency Response Service

We have procedures in place to assist with roads related emergency incidents to ensure a response, 24 hours a day, 7 days a week.

Our emergency response procedures are supported by a well established reporting system to gather operational information from across Northern Ireland during an emergency. A lead communicator is available out of hours all year round to ensure that the latest news on road conditions is available to the travelling public and we have enhanced the trafficwatch website to enable the lead communicator to keep this information updated.

Development Control and Private Streets

Development Control staff act as consultee to Planning Service, providing advice on road safety, traffic progression, transportation, roads layout/standards and policy compliance.

During the 2011/12 financial year, Eastern Division dealt with over 3560 planning application consultations and processed an average 80% of these within 15 working days. (A 70% return is the target set in the Service Level Agreement with Planning Service).

In relation to new housing developments, 12km of Private Streets have been determined in 2011/12. This means that when and if the streets are built to the agreed layout and standard they will be adopted into the public roads network.

91 new sites have started since April 2011 representing approximately 9.8km of new roads and footways. At 31 March 2012 we held £37.8M in bonds, and during 2011/12, £5M bonds were processed with £2.3M released on adoption.

Street Works

Our road network is a major public asset valued at over £32 billion. It accommodates a network of underground pipes and cables which deliver key services to the public including water supply, waste water disposal, electricity, gas and telecommunications.

Utility companies have the right to open the public road to place or maintain their equipment. In 2011-12 there were 43180 utility company road openings across Northern Ireland, with some 18226 in Eastern Division. We work closely with utility companies to minimise disruption caused by street works and ensure better quality reinstatements.

Our Inspectors in Eastern Division have carried out over 5469 visits to streetworks sites to inspect work in progress and completed reinstatements.

Improving the Road Network

Major Road Improvements

Following agreement by the Executive on 14 February 2012, the Minister announced that, subject to the outcome of the public inquiries held last year, projects to provide dual carriageways on sections of the A5, between Londonderry and Strabane, and Omagh and Ballygawley, on the A8 between Belfast and Larne, and at Shore Road Greenisland, would be brought to construction during the current Budget period.

The associated Budget for the period to 2015 will allow development work to continue on a range of other major projects which are important priorities. Delivery of these schemes is dependent on funding levels envisaged through the Investment Strategy for Northern Ireland 2011-21, which is currently being finalised.

Within Eastern Division there are currently four road schemes being developed. These are the A2 Shore Road Greenisland, the York Street Interchange, the A55 Knock Road and the A2 Sydenham Bypass.

- A2 Shore Road Greenisland – Following a Ministerial announcement in February 2012 on funding, this scheme is progressing towards construction. Procurement is underway and works are anticipated to commence on site early in 2013.
- York Street Interchange - Following the Public Consultation in 2011 on the four current road designs, the preferred option for the York Street Interchange is under consideration.
- A55 Knock Road - Following a public inquiry in November 2010, Roads Service intends to publish a Departmental Statement on the A55 Knock Road this summer, confirming if the scheme is to be taken forward or not.
- A2 Sydenham Bypass – the preferred option for the scheme was published in February 2010. Scheme development work is ongoing.

The commencement of construction for the York Street Interchange, the A55 Knock Road and the A2 Sydenham Bypass will depend on the satisfactory completion of an economic assessment, completion of the statutory process and the availability of funding levels envisaged through the Investment Strategy for Northern Ireland 2011-21.

Bridge Strengthening

Roads Service regularly inspects its stock of bridges and other structures on the public road network.

Last year across Eastern Division we inspected 320 structures and carried out maintenance and repair work to 39 bridges and culverts. In 2011/12 we also spent £1.65 million strengthening or upgrading 4 bridges, including Kilroot Bridge, Eden: Boyne Bridge, Belfast: and Marine Parade Subway, Hollywood.

Local Transport and Safety Measures

In 2011/12 we spent over £6.1 million on a range of measures to improve the safety and efficiency of the road network. In Eastern Division this included implementation of:

- 12 Minor Works improvement schemes
- 42 Traffic management schemes
- 8 Collision Remedial measures at specific sites
- 16 Traffic Calming measures;
- 29 Footway schemes and other improvements for pedestrians;
- 4 kms of new cycle facilities
- 19 Safer Routes to School;
- 21 Controlled Pedestrian Crossings
- Improvements to the trafficwatch website and the motorway control system as well as continuously ongoing work to improve the performance of our traffic signals and pedestrian controlled crossings.

Street Lighting

We provide and maintain street lighting on all adopted roads in urban areas and in certain circumstances, on rural roads.

In 2011-12 we spent £4.55 million installing new and maintaining existing lighting systems in Eastern Division. This excludes the energy costs which were £4.1 million.

Street lights are inspected every 2 weeks in winter and every 4 weeks in summer to identify any outages. In the council area, the rate of outages is 1%, which is within our target of keeping 98% of street lights working.

Customer Service

Roads Service aims to inform, consult and involve customers by:-

- supplying up-to-date information through our publications, our website <http://www.drdni.gov.uk/index/roadsni-3.htm> and at shows and exhibitions;
- listening to customer needs; and
- remaining open, transparent and visible at all times.

We publish a wide range of information leaflets on specific road schemes and on the services we provide. Our free newspaper, "On the Move", is published twice a year and distributed through our local offices and public libraries.

We provide up-to-date travel news through our travel information website www.trafficwatchni.com and our traffic hotline for Greater Belfast on 08457 123321. Traffic information is updated at 10 minute intervals and broadcast on BBC Radio Ulster during peak times.

During the development phase of major roads projects, we consult with a wide range of stakeholders, including elected representatives and the public and, particularly, those likely to be directly affected by the works. We hold exhibitions at local venues and inform the public through press articles, leaflet drops and individual visits, as necessary.

During 2011/12 we received 5969 written enquiries from the general public and responded to 96.7% of these within 15 days.

2.0 STRATEGIC ROAD IMPROVEMENTS

Principal Engineer – Roy Spiers(9025 3129) roy.spiers@drdni.gov.uk

He is supported by the following staff:

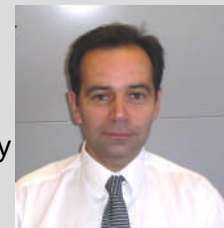
Strategic Road Improvement 1 – Colin Pentland (ext 53212)
colin.pentland@drdni.gov.uk

Colin is responsible for progressing development of the York Street Scheme and is supported by Colin McBurney (ext 53016)



Strategic Road Improvement 3 – Basil Hassard (9025 3272)
basil.hassard@drdni.gov.uk

Basil is responsible for development of the A2 Shore Road dual carriageway scheme, the M1 / A1 Link at Sprucefield and the Sydenham By-pass scheme. Basil is supported by Bobby Murray (ext 53232).



2.1 YORK STREET INTERCHANGE SCHEME

The Westlink / York Street junction is a key link on the Strategic Road Network that presently connects Westlink and the M2 and M3 motorways through a complex traffic signal controlled gyratory system, which also connects with the local road network. This arrangement (and its high traffic usage) causes significant congestion and long delays, particularly at peak times. The recent improvements to the M1/Westlink and M2 Motorway also mean that traffic is now being delivered much more quickly to this junction.

In March 2009, Roads Service completed the Preliminary Options Report, which assessed six options to grade separate the Westlink / York Street junction and provide direct links between Westlink and the M2 and M3 motorways. The Report recommended that four preliminary options be taken forward for further detailed consideration at the next stage of development, the Stage 2 Scheme Assessment. This work is now well underway and on 1st and 2nd June 2011, Roads Service held a public consultation event into the scheme options at the Ramada Encore Hotel, Belfast. Further consultations have taken place as the Stage 2 Scheme Assessment has progressed.

The proposal to upgrade the Westlink / York Street junction is being considered as part of the new Investment Strategy for Northern Ireland. The timescale for construction of the new junction will be dependent upon the successful completion of the necessary statutory procedures, an economic appraisal and the provision of funding through the normal budgetary processes.



One of four Preliminary Options to improve York Street Interchange

2.2 A2 SYDENHAM BYPASS IMPROVEMENT SCHEME

The A2 Sydenham Bypass is one of the most heavily trafficked carriageways in the Belfast Metropolitan Area and forms a vital section of the strategic highway network, linking Bangor and Belfast. The road also provides access to the key gateways of George Best Belfast City Airport, Belfast Port and to several large residential areas. The proposed scheme will widen a 2.5km stretch of the existing A2 Sydenham Bypass from a dual 2-lane carriageway to a dual 3-lane carriageway.

The scheme is currently in the third stage of a three stage assessment process. Stage 1 focused on identifying the environmental, engineering, economic and traffic advantages and disadvantages, as well as the constraints associated with broadly defined improvement strategies. This concluded in the selection of the Proposed Corridor in May 2008. In Stage 2, a detailed assessment of a range of options within the Proposed Corridor was considered. This concluded in the selection of the Preferred Option in February 2010. Stage 3, currently underway, involves detailed assessment of the Preferred Option and ongoing consultation with key stakeholders. This will result in the publication of the Statutory Orders; the draft Direction Order, Environmental Statement and Notice of Intention to Make a Vesting Order. Progression of the scheme beyond this is subject to the satisfactory outcome of the statutory process and future years funding.

Following agreement by the Executive on 14 February 2012, the Minister announced that, subject to the outcome of the public inquiries held last year, projects to provide dual carriageways on sections of the A5, between Londonderry and Strabane, and Omagh and Ballygawley, on the A8 between Belfast and Larne, and at Shore Road Greenisland, would be brought to construction during the current Budget period.

The associated Budget for the period to 2015 will allow development work to continue on a range of other major projects which are important priorities. Delivery of these schemes is dependent on funding levels envisaged through the Investment Strategy for Northern Ireland 2011-21, which is currently being finalised.

3.0 NETWORK DEVELOPMENT

Principal Engineer – Stephen Pollock (9025 3071) stephen.pollock@drdni.gov.uk

He is supported by the following staff:



3.1 MAJOR WORKS

A55 Knock Road Widening

Following a public inquiry in November 2010, we have now received the Inspectors' report and it is currently under consideration. It is intended to publish a Departmental Statement during May 2012 confirming if the scheme is to be taken forward or not.



A55 Knock Road eastbound (existing)



A55 Knock Road eastbound (proposed)

3.2 MINOR WORKS

2011/12 Progress Report

No Minor Works schemes are currently programmed. Councillors are invited to suggest improvement schemes for consideration

3.3 ROUTE IMPROVEMENT STUDIES

None planned in 2012/13.

3.4 BUS MEASURES

2011/12 Progress Report

<i>Scheme</i>	<i>Status</i>
Bus Shelters – there are no further bus shelters available through the Roads Service Contract with Adshel. A new contract will be awarded in 2015.	Completed
Shankill Road - Peter's Hill - Bus Lane inbound	Completed New bus lanes implemented in November 2011.
Castlereagh Street – Widening at Albertbridge Road junction to facilitate a more efficient traffic flow and assist bus reliability is being investigated.	To be implemented when funding allows.
York Street / York Road / Shore Road – City-bound and country-bound bus lanes to improve bus speed and reliability.	Completed New bus lanes implemented in November 2011.
Victoria Street – With-flow bus lane to improve bus speed and reliability	Completed New bus lane implemented in November 2011.
East Bridge Street to May Street – With-flow bus lane to improve bus speed and reliability	Legislative process complete. Implementation during May 2012
Hannahstown Hill Bus Turning Circle – Facility to permit an extension of Metro bus services.	Planning permission granted. Land acquisition underway with a view to complete in 2012/13.

BUS MEASURES

2012/13 Programme of Works

Scheme	Status
Castlereagh Street – Widening at Albertbridge Road junction to facilitate a more efficient traffic flow and assist bus reliability is being investigated.	*To be implemented when funding allows.
East Bridge Street to May Street – With-flow bus lane to improve bus speed and reliability	*Legislative process complete. Implementation during May 2012
Hannahstown Hill Bus Turning Circle – Facility to permit an extension of Metro bus services.	*Planning permission granted. Land acquisition underway with a view to completing in 2012/13.
Black's Road Park & Ride – Extension to P&R site to accommodate approximately 30 cars	Under investigation and subject to funding.


* carried over from 2011/12 Programme

3.5 MAINTENANCE OF STRUCTURES

2011/12 Progress Report


Scheme	Status
Principal Inspections	
Bridge No 20169 – Boyne Bridge (NIR)	Completed
Bridge No 20171 – Queen Elizabeth Bridge	Completed
Bridge No 20195 – North Road Bridge	Completed
Bridge No 20220 – Old Shaws Bridge	Completed
Bridge No 20255 – Ormeau Bridge	Completed
Bridge No 20258 – Shaws Bridge	Completed
Bridge No 26790 – Great Georges Street Gantry	Completed
Bridge No 20125 – East Bridge Street (NIR)	Completed
Bridge No 20141 – Ballygomartin Road	Completed
Bridge No 20147 – M2 on Slip Road / Railway (NIR)	Completed
Bridge No 20151 – Old Westland Road	Completed

Scheme	Status
Bridge No 20152 – Westland Road Culvert	Completed
Bridge No 20153 – Fortwilliam Rail Bridge	Completed
Bridge No 20172 – Queens Bridge	Completed
Bridge No 20181 – Albert Bridge	Completed
Bridge No 20186 – Mersey Street Bridge	Completed
Bridge No 20187 – Sydenham Bypass / Connswater	Completed
Bridge No 20196 – Clara Park	Completed
Bridge No 20201 – Summerhill Avenue	Completed
Bridge No 20227 – Suffolk Bridge	Completed
Bridge No 20251 – Lower Windsor Avenue Footbridge (NIR)	Completed
Bridge No 20268 – Kings Road/Knock River	Completed
Bridge No 20333 – Forthriver Primary School (Confined Space)	Completed
Bridge No 20144 – Shore Road Culvert (Confined Space)	Deferred due to access problems
Bridge No 20185 – Newtownards Road / Connswater	2012/13 Programme
Concrete / Composite Structures	
Bridge No. 20126 – East Bridge Street. Parapet repairs.	Completed
Bridge No. 20171 - Queen Elizabeth Bridge. Repairs to Bridge Deck and application of waterproofing. 	Completed
Bridge No. 20257 – Governors Bridge. Repair of cracking in the soffit.	Completed
Bridge No. 20171 - Queen Elizabeth Bridge. Concrete repairs to substructure, cathodic protection and repainting.	In Progress
Bridge No. 20169 - Boyne Bridge. Waterproofing, replacement of bridge joints on deck and protection of weak footway slabs.	*In Progress

Scheme	Status
Bridge No. 20169 - Boyne Bridge. Repair to steelwork, repainting and spalled concrete on soffit of deck	2012/13 Programme
Steel Structures	
Bridge No. 20246. Donegall Road Bridge (Railway Span). Painting to underside of bridge. 	Completed
Bridge No. 20198. Belmont Park footbridge. Anti-slip surfacing, repainting of steel parapets and minor metalwork repairs.	Completed
Bridge No. 20242. Fane Street footbridge. Painting and reapplication of anti slip following fire damage.	Substantially Complete.
Bridge No 20250. Tate's Avenue (Railway Span). Painting to underside of Bridge	2012/13 Programme
Bridge No. 20222. Lislea Avenue footbridge. Painting of structure	Deferred until further notice.
Masonry Structures	
Bridge No 20255 – Ormeau Bridge. Repairs to Arches	In Progress
Miscellaneous	
Finaghy Road North. Removal of Graffiti. (2 Separate occasions)	Completed
Cycle Ramps	
Bridge No. 20242. Footbridge at Fane Street.	See Cycle Measures

MAINTENANCE OF STRUCTURES

2012/13 Programme of Works

Scheme	Status
Principal Inspections	
Bridge No 20128 – York Road	Programmed
Bridge No 20139 – Ballysillan Road	Programmed
Bridge No 20142 – Springfield Road	Programmed
Bridge No 20144 – Shore Road Culvert (Confined Space)	*Programmed
Bridge No 20179 – Bridge End Flyover	Programmed
Bridge No 20185 – Newtownards Road / Connswater	*Programmed
Bridge No 20194 – A2 Belfast Road	Programmed
Bridge No 20205 – Newtownards Road	Programmed
Bridge No 20226 – Glen Road at Colin River	Programmed
Bridge No 20235 – Falls Park Bridge	Programmed
Bridge No 20248 – Donegall Road at City Hospital	Programmed
Bridge No 20269 – Gilnahirk Road	Programmed
Bridge No 20331 – Stockmans Way	Programmed
Concrete / Composite Structures	
<p>Bridge No. 20171 - Queen Elizabeth Bridge. Concrete repairs to substructure, cathodic protection and repainting.</p> 	*In Progress
Bridge No. 20169 - Boyne Bridge. Waterproofing, replacement of bridge joints on deck and protection of weak footway slabs.	*In Progress
Bridge No. 20169 - Boyne Bridge. Repair to steelwork, repainting and spalled concrete on soffit of deck	*Programmed. Dependant on available finance
Bridge No. 20332. Bridge End Subway. Environmental improvements and community art project.	Programmed

Scheme	Status
Steel Structures	
Bridge No. 20222. Lislea Avenue footbridge. Metalwork repairs	Programmed
Bridge No. 20242. Fane Street footbridge. Painting and reapplication of anti slip following fire damage.	*Substantially Complete.
Bridge No. 20251. Lower Windsor Avenue footbridge. Metalwork repairs	Programmed
Bridge No 20250. Tate's Avenue (Railway Span). Repainting of beams	*Programmed
Masonry Structures	
Bridge No. 20248. Donegall Road at City Hospital Railway Bridge. Repair to masonry parapet	Programmed
Bridge No 20255 – Ormeau Bridge. Repairs to Arches	*In Progress

3.6 BELFAST ON THE MOVE

The main aim of Belfast on the Move is to reorganise traffic management in the city centre to reduce general traffic levels and encourage greater walking, cycling and public transport use. This will require the redistribution of the available road space to favour public transport and cyclists and improvements to the road network to the west of the city centre to provide an alternative and attractive route for northbound traffic.

The 'Sustainable Transport Enabling Measures' (STEM) of the Belfast on the Move project (see plan) will include:

- The redistribution of existing road space in city centre streets to provide extensive priority measures for buses, cyclists and permitted taxis, with 2.6km of new bus lanes identified, which will also accommodate cyclists and permitted taxis;
- The section of Grosvenor Road between Fisherwick Place and Durham Street will become one-way westbound and College Square North will become one-way eastbound, both with contra-flow cycling provision;
- The re-routing of northbound through traffic from Great Victoria Street onto a new 'two-way' Hope Street and Durham Street, with southbound traffic continuing to use Great Victoria Street;
- The provision of 20 new controlled pedestrian crossing points;
- The provision 340m of new dedicated service bays;
- The provision of 1km of new dedicated cycle lanes; and
- The provision of over 40 additional dedicated disabled parking bays.

The **Sustainable Transport Enabling Measures** (STEM) are made up of 18 separate elements of work across the city centre, with proposals planned to be taken forward over the next two years. A number of Traffic Regulation Orders were necessary to control traffic and provide bus lanes, parking bays, loading bays, disabled bays, cycling measures and coach parking facilities. These have now all been successfully made allowing the works to be progressed.

SUSTAINABLE TRANSPORT ENABLING MEASURES

TRAFFIC MANAGEMENT ON WEST SIDE OF CITY CENTRE

- Hope Street becomes two-way
- Northbound traffic diverted via Durham Street
- Southbound traffic continues on Great Victoria Street
- Durham Street becomes one-way northbound
- Grosvenor Road becomes one-way westbound
- College Square North becomes one-way eastbound
- 'Rat-run' through Barrack Street prevented

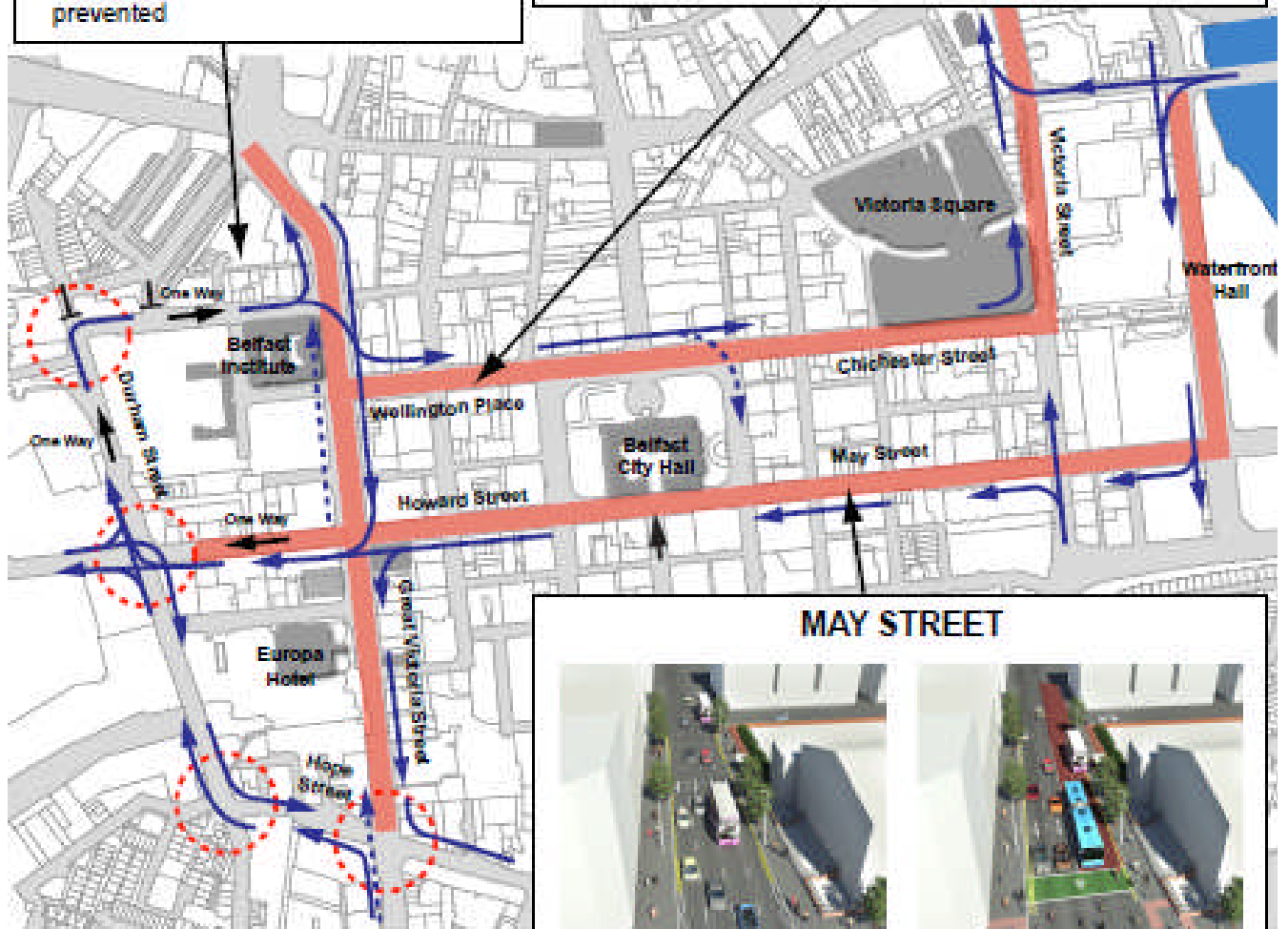
WELLINGTON PLACE



BEFORE



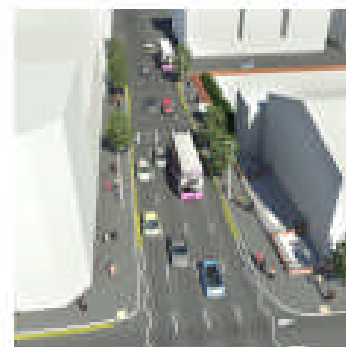
AFTER



KEY

- Intensive Bus Priority Measures
- Main Traffic Routes
- Key Junction Improvements
- Local Traffic Access

MAY STREET



BEFORE



AFTER

Work commenced in October 2011 with the introduction of a new bus lane in Victoria Street and the provision of a Toucan crossing on Victoria Street at the Victoria Centre.

Work then started in January 2012 on the junctions at Grosvenor Road / Durham Street and Great Victoria Street / Bruce Street (Hope Street). Following completion of these works by Summer 2012 and the planned installation of new traffic signals at the junction of Hope Street / Sandy Row / Linfield Road, Hope Street will be made 2 way. This work will allow traffic travelling towards Grosvenor Road and Millfield to use Hope Street and Durham Street as an alternative to Great Victoria Street.

Work is due to commence in May / June 2012 on the introduction of bus lanes and bus gates, giving priority to public transport vehicles in Oxford Street, May Street, Donegall Square South and Howard Street. This work will also include resurfacing behind City Hall from Oxford Street to Fisherwick Place. Linenhall Street from its junction with James Street South to Donegall Square South will become one way northbound as part of these works.

Legislation has also been completed to allow for the stopping up of the Barrack Street 'rat-run'. This work at Durham Street / College Square North / Galway Street and College Square North / Hamill Street / Killen Street is scheduled to be carried out in summer 2012, with the support of the residents in the area.

Appropriate localised signing will be provided to advise motorists of all the changes.

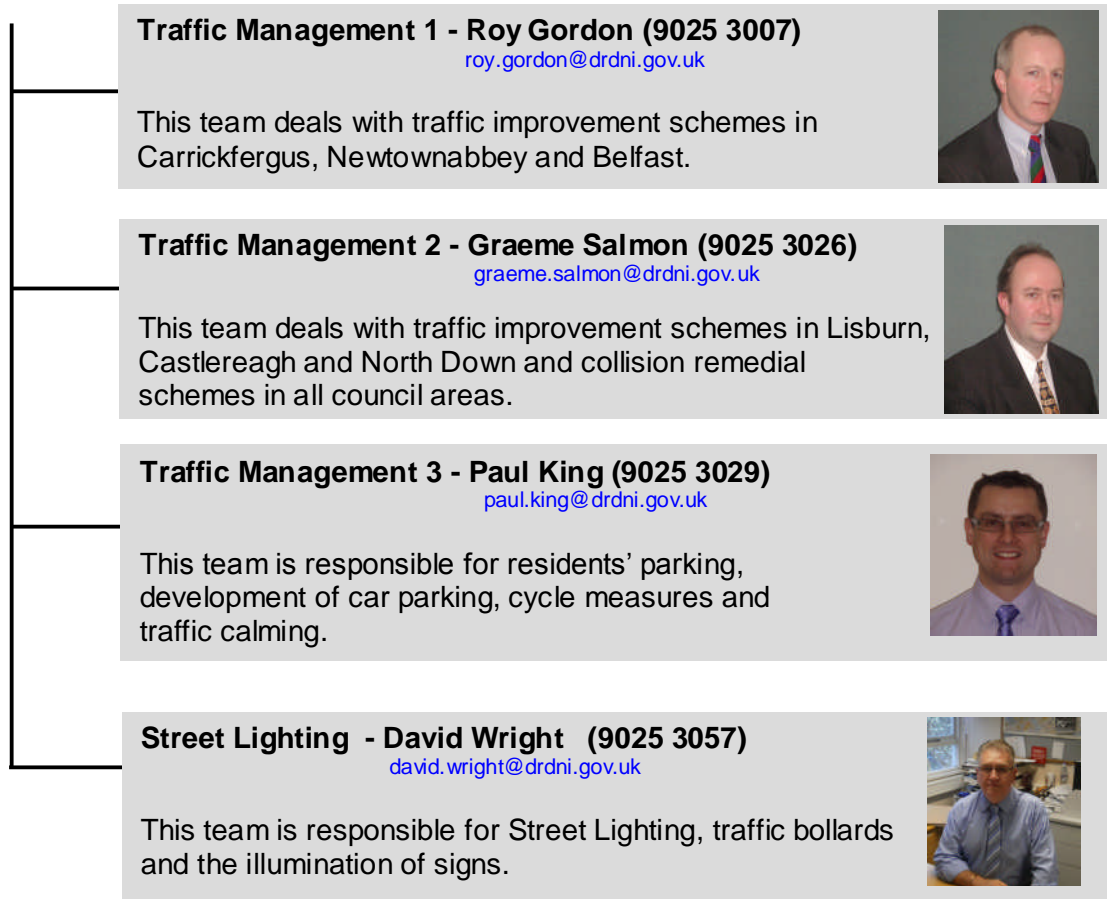
Strategic signing will also be improved as far out as the Outer Ring Road (A55) to encourage traffic to use alternative routes rather than travel unnecessarily through the city centre.

Further details of the Belfast on the Move Transport Plan and updates as the work progresses are available on the Department's website at www.drndni.gov.uk/index/belfastonthemove.htm

4.0 NETWORK TRAFFIC AND STREET LIGHTING

Principal Engineer – Norman Chambers (9025 3006) norman.chambers@drdni.gov.uk

He is supported by the following staff:



4.1 COLLISION REMEDIAL SCHEMES

2011/12 Progress Report

<i>Scheme</i>	<i>Status</i>
Crumlin Road - channelisation	Completed
Antrim Road / Cliftonville Road – provide high friction surface at junction	Completed
Nelson Street / York link – improve sight lines and enhance traffic signals arrangement	Completed


COLLISION REMEDIAL SCHEMES

2012/13 Programme of Works

<i>Scheme</i>	<i>Status</i>
Crumlin Road / Ballyutoag Road – high friction surfacing and enhanced signing	Programmed

4.2 TRAFFIC SCHEMES

2011/12 Progress Report

<i>Scheme</i>	<i>Status</i>
Belmont Road through village – limited waiting parking	In Progress
College Park – footway extension at rear of QUB 	Completed
Crumlin Road / Ligoniel Road – right turn filter	Programmed

Scheme	Status
Donegall Road at Park Centre roundabout – kerb re-alignment	*Completed
Dublin Road at Marcus Ward Street – central island	In Progress
Middlepath Street at M3 off-slip – pedestrian facilities	*In Progress
Oldpark Road (Carr’s Glen Primary School to Alliance Ave) – channelisation and white lining	Completed
Oldpark Road near Dunkeld Gardens - channelisation	Completed
Springfield Park at Springfield Road – alteration to traffic island	Completed
Stewartstown Road at Suffolk Road – right turn filter	Completed
University Road at Elmwood Avenue – puffin crossing	*Completed
Upper Malone Road near Finaghy Road South – pedestrian island and central hatching	Completed

* additional to Programme

TRAFFIC SCHEMES

2012/13 Programme of Works


Scheme	Status
Belmont Road through village – limited waiting parking	*In Progress
Crumlin Road / Ligoniel Road – right turn filter	*Programmed
Dublin Road at Marcus Ward Street – central island	*In Progress
Middlepath Street at M3 off-slip– pedestrian facilities	*In Progress


* carried over from 2011/12 Programme

4.3 PEDESTRIAN MEASURES

2011/12 Progress Report

Scheme	Status
Quality Walking Corridor. Grosvenor Road – City centre to Falls Road including zebra relocation at RVH	In Progress
Quality Walking Corridor. Central Station to City centre	Completed
Quality Walking Corridor. Donegall Road (Sandy Row to Roden Street)	*In Progress

Scheme	Status
Quality Walking Corridor. Great Victoria Street Station to City centre	Completed
Quality Walking Corridor. Ravenhill Road	Completed
Antrim Road – dropped kerb scheme	Removed from Programme
Ballysillan Road at Leisure Centre – pedestrian crossing	Completed
Beechmount Avenue near St Roses High School – pedestrian crossing	In Progress
Cliftonville Road at BRA school – pedestrian crossing	Completed
Connsbrook Avenue at Strandburn Street – pedestrian crossing	In Progress
Crumlin Road at Snugville Street – pedestrian crossing	Completed
Dee Street at Island Street – toucan crossing 	*Completed
Dock Street/Garmoyle Street – pedestrian facilities and corner improvement	*In Progress
Earlswood Road – resurfacing of footway and dropped kerbs to improve accessibility	Completed
Ladas Drive / Alexander Road – pedestrian facilities	In Progress
Malone Road – dropped kerb scheme to improve accessibility	In Progress
Monagh Road – dropped kerb scheme to improve accessibility	Completed
North Queen Street at Deacon Street – pedestrian island	Completed
Oldpark Road near Oldpark Terrace – pedestrian crossing	In Abeyance
Ravenhill Road - dropped kerb scheme to improve accessibility	Completed

Scheme	Status
Ravenhill Road at Ravenhill Avenue – pedestrian crossing 	Completed
Stranmillis Road near Richmond Park – 2 pedestrian islands	Completed
Sunningdale Gardens – dropped kerb scheme	Completed
Victoria Street / Chichester Street – pedestrian stage	Completed

* additional to Programme

TRAFFIC SCHEMES


2012/13 Programme of Works

Scheme	Status
Quality Walking Corridor. Grosvenor Road – City centre to Falls Road including zebra relocation	*In Progress
Quality Walking Corridor. Donegall Road	*In Progress
Beechmount Avenue near St Roses High School – pedestrian crossing	*In Progress
Connsbrook Avenue at Strandburn Street – pedestrian crossing	*In Progress
Dock Street/Garmoyle Street – pedestrian facilities and corner improvement	*In Progress
Ladas Drive / Alexander Road – pedestrian facilities	*In Progress
Malone Road – dropped kerb scheme	*In Progress
Oldpark Road near Oldpark Terrace – pedestrian crossing	*Programmed
Oldpark Road near Manor Street – pedestrian crossing	Programmed

* carried over from 2011/12 Programme

4.4 SAFER ROUTES TO SCHOOLS

2011/12 Progress Report

<i>Scheme</i>	<i>Status</i>
BRA	Completed
Carr's Glen Primary School	Completed
Glenwood Primary School	Completed
Rosetta Primary School 	Completed
Saint Dominic's Grammar School	Completed
Strandtown Primary School	Completed

SAFER ROUTES TO SCHOOLS

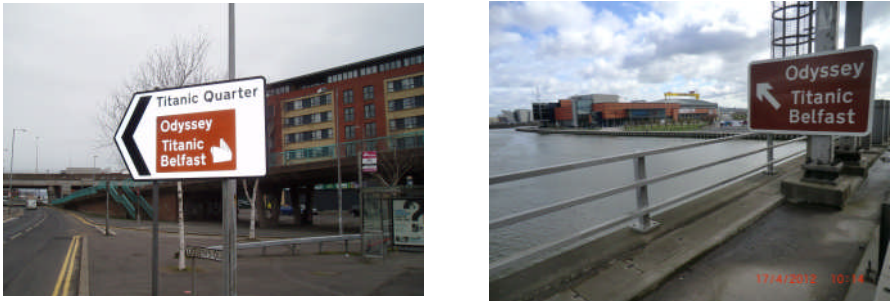
2012/13 Programme of Works

<i>Scheme</i>	<i>Status</i>
Schemes will be provided as required	On going

4.5 TRAFFIC SIGNS

2011/12 Progress Report

<i>Scheme</i>	<i>Status</i>
Abbey Road at Abbey Gardens – ‘Give Way’ sign	In Progress
Ardelia Street – 3 no. pedestrian guard rail panels	Completed
Avoniel Drive and Avoniel Road – 2 no. ‘Children’ signs and ‘School’ plates	Completed
Beverley Street – 1 no. ‘Children Playing’ sign and ‘Playground’ plate	Completed
Boucher Road – 4 no. ‘Boucher Retail Park’ signs	Completed
Cliftonville Road – 2 no. ‘Children’ signs and ‘Patrol’ plates	Completed
Clifton Street at Westlink Bridge and Carlisle Circus – 4 no. direction signs	Completed
Denmark Street and North Boundary Street – 2 no. ‘Pedestrian on Road Ahead’ signs	Completed
Divis Street – 13 no. Direction signs	Completed
Divis Street (Quality Walking Corridor) – 15 no. direction signs	Completed
Donegall Avenue – Low Bridge sign	Completed
Dover Street - 1 no. ‘Children Playing’ sign and ‘Playground’ plate	Completed
Dunluce Avenue - 6 no. ‘One Way’ signs	Completed
Dunluce Avenue – 2 no. ‘No Entry’ signs	Completed
East Bridge Street at Mays Meadow – Low Bridge sign	Completed
Knock Road at Upper Newtownards Road – Advance direction sign	In Progress
Lisburn Road near City Hospital – 2 no. ‘City Hospital’ signs	Completed
Lisburn Road at Wellesley Avenue – 2 no. ‘Samaritans’ signs	Completed
Lincoln Avenue at Antrim Road – ‘No Through Road’ sign	In Progress
Lorne Street – 1 no. Mon-Sat 8am–6pm no waiting plate	Completed
Lower Crescent near University Road – ‘Turn right’ sign and ‘One Way’ plate	Completed
Malone Road near Balmoral Avenue – sign for ‘King’s Hall’	Completed
Marlborough Park South (near Lisburn Road) - 1 no. Mon-Sat 8am – 6pm no waiting plate	In Progress
North Street – Car Parking sign	Completed

Scheme	Status
Onslow Parade – 2 no. ‘No Entry’ signs	Completed
Onslow Parade and Ravenhill Park – 4 no. ‘One-way’ repeater signs	Completed
Orby Street – Monday to Saturday 8am – 6pm waiting plate	In Progress
Peter’s Hill – 2 no. ‘Limited Waiting’ signs	Completed
Pomona Avenue - 3 no. Mon-Fri 8am–6pm no waiting plates	Completed
Rugby Avenue - 1 no. Mon-Sat 8am – 6pm no waiting plate	Completed
Summerhill Avenue / Abbey Road – Weight Restriction sign	Completed
Templemore Street - 2 no. ‘Children’ signs	Completed
Templemore Street – ‘No Through Road’ sign	Completed
Odyssey, Titanic Belfast signs (21 no. signs- various City centre locations)	Completed
	
Willowfield Drive – 2 no. ‘Rupert Stanley’ signs removed	Completed
York Street (Quality Walking Corridor) – 6 no. direction signs	Completed

TRAFFIC SIGNS

2012/13 Programme of Works

Scheme	Status
Traffic signs will be provided as required	On going
Abbey Road at Abbey Gardens – ‘Give Way’ sign	*In Progress
Knock Road at Upper Newtownards Road – Advance direction sign	*In Progress
Lincoln Avenue at Antrim Road – ‘No Through Road’ sign	*In Progress

Scheme	Status
Marlborough Park South (near Lisburn Road) - 1 no. Mon-Sat 8am – 6pm no waiting plate	*In Progress
Orby Street – Monday to Saturday 8am – 6pm waiting plate	*In Progress

* carried over from 2011/12 Programme

4.6 CARRIAGEWAY MARKINGS

2011/12 Progress Report

Scheme	Status
Abbey Road at Abbey Gardens – ‘Give Way’ triangle	Completed
Ballymacarrett Road – waiting restrictions	Completed
Ballymurphy Road – 4 no. ‘Give Way’ markings at Bull-Ring	Completed
Belmont Road at Holywood Road – 1 no. hazard marking	Completed
Benmore Drive at Moveen House – 2 no. ‘I’ bar marks	Completed
Botanic Avenue at Bible College – alterations to parking bays	In Progress
Boucher Road at Balmoral Road – 2 no. straight ahead arrows	Completed
Bridge Street – box marking	Completed
Broadway roundabout at Westlink off-slip – new laning arrangement	Completed
Cadogan Park – ‘Keep Clear’ marking	Completed
Dermott Hill Road – Centre line and edge of carriageway marking on bend	Completed
Derrin Pass – 2 no. ‘Give Way’ markings	Completed
Donegall Pass – ‘Keep Clear’ marking	Completed
Donegall Quay – Yellow box marking and revised lane markings	Completed
East Bread Street – ‘Give Way’ marking	In Progress
Eglantine Avenue – end of parking road marking	Completed
Finaghy Road North – waiting restrictions	Completed
Glen Road at Gransha shops – road markings for new one-way system	Completed
Holylands area – corner restrictions (31 no.)	Completed

<i>Scheme</i>	<i>Status</i>
Knocknagoney Avenue at Knocknagoney Drive – 'I' bar road marking	Completed
Lorne Street – Waiting restrictions	Completed
Marlborough Park South (Lisburn Road end) – Waiting restrictions	Completed
Newtownards Road at Middlepath Street – deflection arrow	Completed
Malone Road at Sans Souci Park – waiting restrictions	Completed
Malone Avenue at Eglantine Place and Eglantine Gardens – 'Give Way' markings and 'Turn Left' arrow	Completed
Onslow Park – 'Give Way' marking and 'Turn Left' arrow	Completed
Orby Street – waiting restrictions	Completed
Ormeau Road near McClure Street – corner restriction	Completed
Ormiston Park at Wandsworth Road – Turn left arrow/marking	Completed
Pomona Avenue – Waiting restrictions	Completed
River Terrace – waiting restrictions in turning circle and 'Keep Clear' marking	In Progress
Rossmore Avenue – 2 no. 'Give Way' triangles	Completed
Rugby Avenue (near Ormeau Road) – Limited waiting	Completed
Saint Georges Gardens/Albion Street – corner restrictions	Completed
Sandhill Drive – 'Give Way' marking	Completed
Stranmillis Embankment near Governor's Bridge – revision to lane lines	Completed
Templemore Avenue – Waiting restrictions	Completed
Trigo Parade/Castlereagh Road – 2 no. corner restrictions	Completed
Tyndale Drive at Carrs Glen Park – 'Give Way' marking	Completed
University Road at QUB – new markings at new puffin crossing	Completed
Walnut Street – Corner restrictions	Completed
Westlink at Clifton Street off-slip – road markings and arrows	In Progress
Wellington Court – 2 no. corner restrictions	Completed
Windsor Park at Windsor Mews – 2 no. corner restrictions	Completed

CARRIAGEWAY MARKINGS

2012/13 Programme of Works

<i>Scheme</i>	<i>Status</i>
Carriageway markings will be provided as required	On going
Botanic Avenue at Bible College – alterations to parking bays	*In Progress
East Bread Street – ‘Give Way’ marking	*In Progress
River Terrace – waiting restrictions in turning circle and ‘Keep Clear’ marking	*In Progress
Westlink at Clifton Street off-slip – road markings and arrows	*In Progress

* carried over from 2011/12 Programme

4.7 LEGISLATION

2011/12 Progress Report

<i>Scheme</i>	<i>Status</i>
WAITING RESTRICTIONS	
Ballymacarrett Road – At Any Time	Completed
Finaghy Road North – At Any Time	Completed
Malone Road – At Any Time	Completed
Marlborough Park South (near Malone Road) – Monday to Friday 8am – 6pm	Completed
Mulhouse Road – At Any Time	2012/13 Programme
Orby Street – Monday to Saturday – 8am – 6pm	Completed
TRAFFIC ORDERS	
Dunluce Avenue (one-way traffic system) – Ulsterville Drive to Fane Street	Completed

<i>Scheme</i>	<i>Status</i>
WAITING RESTRICTIONS	
North Derby Street – At Any Time	In Progress
Mulhouse Road – At Any Time	*Programmed
Music Hall Lane – At Any Time	In Progress
Woodstock Link (in lay-bys) – Limited Waiting	In Progress

* carried over from 2011/12

4.8 DISABLED PARKING BAYS

2011/12 Progress Report

<i>Scheme</i>	<i>Status</i>
Applications for 'disabled' parking bays were assessed on an individual basis, as they were received	Ongoing
15 Bloomfield Road, Belfast	Completed
34 Blythe Street, Belfast	Completed
1 Chichester Avenue, Belfast	Completed
104 Ulsterville Avenue, Belfast	Completed
163 Park Avenue, Belfast	Completed
Ridgeway Street, Belfast (at Lyric Theatre)	Completed
4 Sydenham Drive, Belfast	Completed
72 University Street, Belfast	Completed
6 Cliftonville Street, Belfast	Completed
72 Cliftonville Road, Belfast	Completed
72 Cavendish Street, Belfast	Completed
79 Jonemount Park, Belfast	Completed
34 Park Avenue, Belfast	Completed
42 Blythe Street, Belfast	In Progress

<i>Scheme</i>	<i>Status</i>
3 City Walk, Belfast	In Progress
6 Eblana Street , Belfast	Completed
44 Pertoria Street, Belfast	In Progress
36 Ponsonby Avenue, Belfast	In Progress
56 Ulsterville Gardens, Belfast	In Progress
37 Wallasey Park, Belfast	In Progress
25 Glenveagh Drive, Belfast	In Progress
27 Inverary Avenue, Belfast	In Progress
16 Eastleigh Crescen, Belfast	In Progress
80 Willowbank Gardens, Belfast	In Progress
50 Fairhill Park, Belfast	In Progress
Ponsonby Avenue, Belfast	In Progress
Disabled parking bays to be removed	
1 Durham Cour , Belfast	Completed
Inverwood Gardens, Belfast	Completed
29 My Ladys Road, Belfast.	Completed
121 New Lodge Road, Belfast	Completed
Nevis Avenue Opp. 5, Belfast	Completed
1 Durham Court, Belfast	Completed
23 Pomona Avenue, Belfast	In Progress
1 Glencairn Crescent, Belfast	In Progress
95 Benmore Drive, Belfast	In Progress
13 Dromore Street, Belfast	In Progress
1 Chichester Avenue, Belfast	In Progress
28 Parkmount Gardens, Belfast	In Progress
44 Ashley Avenue, Belfast	In Progress

<i>Scheme</i>	<i>Status</i>
40 Ashley Avenue, Belfast	In Progress
32 Ulsterville Gardens, Belfast	In Progress
3 The Mount, Belfast	In Progress
97 The Mount, Belfast	In Progress

DISABLED PARKING BAYS

2012/13 Programme of Works

<i>Scheme</i>	<i>Status</i>
Applications for 'disabled' parking bays will be assessed on an individual basis, as the yare received	Ongoing
42 Blythe Street, Belfast	*In Progress
3 City Walk, Belfast	*In Progress
44 Pertoria Street, Belfast	*In Progress
36 Ponsonby Avenue, Belfast	*In Progress
56 Ulsterville Gardens, Belfast	*In Progress
37 Wallasey Park, Belfast	*In Progress
25 Glenveagh Drive, Belfast	*In Progress
27 Inverary Avenue, Belfast	*In Progress
16 Eastleigh Crescent, Belfast	*In Progress
80 Willowbank Gardens, Belfast	*In Progress
50 Fairhill Park, Belfast	*In Progress
Ponsonby Avenue, Belfast	*In Progress
Disabled parking bays to be removed	
23 Pomona Avenue, Belfast	*In Progress
1 Glencairn Crescent, Belfast	*In Progress
95 Benmore Drive, Belfast	*In Progress

<i>Scheme</i>	<i>Status</i>
13 Dromore Street, Belfast	*In Progress
1 Chichester Avenue, Belfast	*In Progress
28 Parkmount Gardens, Belfast	*In Progress
44 Ashley Avenue, Belfast	*In Progress
40 Ashley Avenue, Belfast	*In Progress
32 Ulsterville Gardens, Belfast	*In Progress
3 The Mount, Belfast	*In Progress
97 The Mount, Belfast	*In Progress

* carried over from 2011/12 Programme

4.9 STREET LIGHTING

2011/12 Progress Report

<i>Scheme</i>	<i>Status</i>
Larkfield Manor	Completed
Orangefield Park	Completed
Sandown Park South	Completed
College Park Avenue	2012/13 Programme
Barnetts Road	Completed
Summerhill Avenue	2012/13 Programme
Ava Street	2012/13 Programme
Delhi Street	In Progress
Kerrsland Crescent/Parade/Drive	2012/13 Programme
Kirkliston Gardens	2012/13 Programme
Holland Crescent	2012/13 Programme
Abbetta Parade	2012/13 Programme
Greenville Road	2012/13 Programme

<i>Scheme</i>	<i>Status</i>
Grace Avenue	Completed
Osbourne Gardens	2012/13 Programme
Governors Bridge	2012/13 Programme
Florenceville Drive	2012/13 Programme
Oldpark Road	In Progress
Crumlin Road	2012/13 Programme
Antrim Road	Completed
Monagh Bypass	Completed
Forthriver Road	2012/13 Programme
Rosapenna Street	2012/13 Programme
Halidays Road	2012/13 Programme
Ventry Street	2012/13 Programme

STREET LIGHTING

2012/13 Programme of Works

<i>Scheme</i>	<i>Status</i>
College Park Avenue	*Programmed
Summerhill Avenue	*Programmed
Ava Street	*Programmed
Delhi Street	*In Progress
Kerrsland Crescent/Parade/Drive	*Programmed
Kirkliston Gardens	*Programmed
Holland Crescent	*Programmed
Abbetta Parade	*Programmed
Greenville Road	*Programmed
Osbourne Gardens	*Programmed


<i>Scheme</i>	<i>Status</i>
Governors Bridge	*Programmed
Florenceville Drive	*Programmed
Oldpark Road	*In Progress
Crumlin Road	*Programmed
Forthriver Road	*Programmed
Rosapenna Street	*Programmed
Halidays Road	*Programmed
Ventry Street	*Programmed
Jamacia Road	Programmed
Cliftonville Road	Programmed
Glenside Park	Programmed
Shannon Street	Programmed

* carried over from 2011/12 Programme

4.10 CYCLE MEASURES

2011/12 Progress Report

<i>Scheme</i>	<i>Status</i>
Advanced stop lines for cyclists	In Progress
Albertbridge Road cycle lanes and cycle track	Awaiting signs
Cycle link East Belfast -Titanic Quarter via re-opened Fraser Street	In Progress
Fane Street wheeling ramps	2012/13 Programme
Joy Sreet contraflow cycle lane	Completed
Newtownards Road cycle lanes	Completed
Ormeau Bridge re-profiling at NCN Toucan crossing	In Progress
Ravenhill Road modification of Ormeau Embankment junction cycle lane	Completed

Scheme	Status
Toucan crossing on Comber Greenway at Beersbridge Road	In Progress
Toucan crossing on Comber Greenway at Dee Street	Completed
Toucan crossing on Comber Greenway at Kings Road	Completed
University Square contraflow lane for cyclists	2012/13 Programme
Brunswick Street road hump to compliment cycle lane	*In Progress
Crumlin Road cycle lanes Ballysillan Road to Ardoyne Road	*Completed
Duncrue Road / Street resurfaced NCN footway, added road humps at junctions and planted trees	*Completed
	
Island Street traffic calming measures for cycle route	*In Progress

* additional to Programme

CYCLE MEASURES

2012/13 Programme of Works


Scheme	Status
Advanced stop lines for cyclists	*In Progress
Albertbridge Road cycle lanes and cycle track	*Awaiting signs
Brunswick Street road hump to compliment cycle lane	*In Progress
Cycle link East Belfast-Titanic Quarter via re-opened Fraser Street	*In Progress
Fane Street wheeling ramps	*Programmed

<i>Scheme</i>	<i>Status</i>
Ormeau Bridge re-profiling at NCN Toucan crossing	*In Progress
Toucan crossing on Comber Greenway at Beersbridge Road	*In Progress
University Square contraflow lane for cyclists	*Programmed
Island Street traffic calming measures for cycle route	*In Progress


* carried over from 2011/12 Programme

4.11 TRAFIC CALMING

2011/12 Progress Report

<i>Scheme</i>	<i>Status</i>
Circular Road - Traffic calming scheme 	Completed.
Connsbrook Avenue – Traffic calming scheme	Objections being considered
Cranmore Park Area – Traffic calming scheme	Objections being considered

<i>Scheme</i>	<i>Status</i>
----------------------	----------------------

Finaghy Road North – Traffic calming scheme	Local opposition expressed to the proposed positioning of traffic islands.
Island Street area - Traffic calming scheme and cycling facilities	Substantially Completed.
Kilcoole Park area – Traffic calming scheme	<p>During a previous consultation process for a scheme in this area a high number of objections were received.</p> <p>A review of our assessment of this area has resulted in the reduction of the priority of this scheme. Therefore this scheme has been removed from the programme.</p>
Lower Malone Area - Traffic calming scheme	Substantially Completed.
<p>Newington Area - Traffic calming scheme</p> 	Completed.
Sicity Park Area – Traffic calming scheme	Substantially Completed.

TRAFFIC CALMING

2012/13 Programme of Works

<i>Scheme</i>	<i>Status</i>
Connsbrook Avenue – Traffic calming scheme	* Objections being considered
Cranmore Park Area – Traffic calming scheme	* Objections being considered
Finaghy Road North – Traffic calming scheme	Due to local opposition the proposed implementation of the traffic islands has been deferred pending our routine assessment of the effectiveness this scheme.
Island Street area - Traffic calming scheme and cycling facilities	*Programmed for completion.
Lower Malone Area - Traffic calming scheme	*Programmed for completion.
Sicity Park Area – Traffic calming scheme	*Programmed for completion.

* carried over from 2011/12 programme

It should be noted that all Traffic Calming schemes are subject to a legislative process and to the availability of funding before they can proceed.

The legislative process provides for representations / objections to be received on our proposals. Where residents do not support individual schemes or where objections are received, it may not be possible to deliver our intended programme. In this event substitutions, on a Division-wide basis, may be made throughout the financial year.

4.12 CAR PARKING

2011/12 Progress Report

<i>Scheme</i>	<i>Status</i>
Provision of additional On-Street Pay and Display spaces.	We have identified some additional streets where we consider it would be appropriate to provide on-street parking.

Scheme	Status
Increases to existing Charged Car Parking.	<p>1. Off- Street Parking.</p> <p>Tariff increases were applied to a number of Pay and Display and to kiosk operated car parks on 15 August 2011 and 15 October 2011 respectively.</p> <p>2. On –Street Parking.</p> <p>Tariff increases were applied to on-street car parking from 15 August 2011.</p>
Introduction of Charges.	<p>The notice of intention to introduce charges in the car parks below, together with other Roads Service car parks, was advertised in the local press on 30 March 2011.</p> <p>Charges cannot be implemented within those car parks below which are currently free of charge until the legislative process has been completed.</p> <ul style="list-style-type: none"> • Ashdale Street • Marlborough Avenue <p>As there are new tariffs proposed for the following charged car parks these changes were included in the notice of intention to introduce charges. Station Street was the exception to this and was included to correct a drafting error. This notice was advertised on 30 March 2011.</p> <ul style="list-style-type: none"> • Eastside • Great George's Street (York St 2) • Northside • Station Street
Car Park Maintenance	On-going maintenance was undertaken to our off-street car parks when required.

CAR PARKING

2012/13 Programme of Works

Scheme	Status
Provision of additional On-Street Pay and Display spaces as identified.	The Council will be formally advised when the consultation process commences.
Increases to existing Charged Car Parking.	<p>3. Off- Street Parking.</p> <p>The legislative process has been completed and charges will now be implemented within the following, currently free car parks in early June 2012.</p> <ul style="list-style-type: none">• Ashdale Street• Marlborough Avenue <p>New tariffs will also be introduced in the following charged car parks in early June 2012.</p> <ul style="list-style-type: none">• Eastside• Great George's Street (York St 2)• Northside• Station Street
Car park operations.	The Charlotte Street car park which was formally operated by kiosk was changed to pay and display on 16 April 2012.
Review of our off and on-street parking charges.	The Minister has temporarily put the year two tariff review on hold whilst he has further discussions with Executive colleagues.
Car Park Maintenance	On-going maintenance will be undertaken to our off-street car parks when required.

4.13 RESIDENTS' PARKING

We have been working closely with local representatives from the Lower Malone and Stranmillis areas of Belfast, with the aim of implementing schemes, and a draft scheme layout has been agreed for each area. Following concerns raised about the cost of an annual parking permit Roads Service completed a review of the cost and the Minister has agreed to a reduction in the cost to £30. This charge will only apply for permits within those schemes that lie wholly outside of a Neighbourhood Renewal Area.

We have recently re-engaged with local representatives from the Lower Malone and Stranmillis areas and we also plan to re-engage with representatives from the Donegall Pass and Sandy Row areas, two of the original areas included in the earlier consultation processes.

5.0 NETWORK TRANSPORT TELEMATICS

Principal Engineer – Brian Maxwell (9025 4500) brian.maxwell@drdni.gov.uk

He is supported by the following staff:

Declan Murphy (9025 4536) declan.murphy@drdni.gov.uk
This team is responsible for the day to day running of the Traffic Information and Control Centre. It is responsible for the installation, maintenance and operation of Intelligent Transport Systems (ITS) including traffic control on the urban and motorway networks and the provision of traffic and travel information.



Damien King (9025 4529) damien.king@drdni.gov.uk
This team has specific responsibilities for issues of Road Safety including the development of the Road Safety Engineering Report and the establishment of Central Road Safety Unit. It is also responsible for compiling traffic census, vehicle kilometre travel surveys and managing the road works website.



TICC's TrafficwatchNI website



M1 / A12 Westlink Managed Route

5.1 NETWORK TRANSPORT TELEMATICS

2011/12 Progress Report

Scheme	Status
TRAFFIC INFORMATION WEBSITE	
TrafficwatchNI website will be enhanced to include a page which will supplement the traffic news page in emergency roads related situations such as, flooding, snow, ice etc.	Completed
PELICAN CROSSINGS	
<p>The Remote Monitoring System (RMS) enables TICC to monitor the operation of pelican crossings from the Control Centre.</p> <p>RMS coverage has been extended to the following 10 crossings in Belfast;</p> <ul style="list-style-type: none"> • Antrim Road at Ben Madigan School • Blacks Road at Brooke Park • Blacks Road at Oranmore Drive • Glen Road at Glencolin Drive • Glen Road at Norfolk Parade • Springfield Road at Crocus Street • Stewartstown Road at Lenadoon Avenue • Glen Road at Christian Brothers School • Ormeau Road at Park Road • Shore Road at Gray's Lane 	<p>Completed</p> <p>Completed</p> <p>Completed</p> <p>Completed</p> <p>Completed</p> <p>Completed</p> <p>Completed</p> <p>Completed</p> <p>In Progress</p> <p>Completed</p> <p>Completed</p>
PEDESTRIAN ENHANCEMENTS	
<p>Subject to adequate funding the following existing Pelican crossings will be upgraded to Puffin crossings;</p> <ul style="list-style-type: none"> • Hollywood Road at Station Road • Blacks Road at Oranmore Drive • Antrim Road at Adela Place (St Malachy's College) 	<p>Completed</p> <p>Completed</p> <p>Completed</p>

Scheme	Status
<ul style="list-style-type: none"> • Ravenhill Road at St Judes (Aquinas College) • Lisburn Road at Ulsterville Avenue • Crumlin Road at Mater Hospital • Donegall Road at Maldon Street 	<p>Postponed due to planned resurfacing. Replaced with Crumlin Road at Mater Hospital</p> <p>Postponed due to planned resurfacing. Replaced with Donegall Road at Maldon Street</p> <p>*Completed</p> <p>*Completed</p>
URBAN CLOSED CIRCUIT TELEVISION (CCTV) CAMERAS	
There is an ongoing review of CCTV cameras within the council area to identify those that need to be upgraded and whether the CCTV coverage remains adequate.	Ongoing
TRAFFIC SIGNALS	
We will monitor traffic signal timings to ensure they are appropriate for the prevailing traffic conditions and subject to adequate funding we will upgrade traffic signal equipment as necessary.	Ongoing
MOTORWAY COMMUNICATIONS AND CONTROL	
Utilise TICC's motorway communications & control infrastructure together with CCTV traffic monitoring facilities to efficiently manage traffic on motorways and Westlink.	Ongoing
Investigate possible improvements to M1 traffic flow both approaching and leaving the city	Ongoing issues at Blacks Road off-slip being analysed and monitored.
BUS PRIORITY & REAL TIME PASSENGER INFORMATION	
Subject to adequate funding, BusTrak may be extended to include the Lisburn Road bus route in Belfast.	No progress due to imminent tender competition.

Scheme	Status
JOURNEY TIME MEASUREMENT	
Subject to adequate funding, extend coverage of the Journey Time Estimation Project to provide travel times for Road Users on strategic routes serving Belfast.	Ongoing
CENTRAL ROAD SAFETY UNIT	
This unit will continue to have a strategic overview of road safety and the analysis of collision data on roads across the Province.	Ongoing

* additional to Programme

NETWORK TRANSPORT TELEMATICS 2012/13 Programme of Works

Scheme	Status
TRAFFIC AND TRAVEL INFORMATION	
The TrafficwatchNI website will be enhanced to include better mapping and Road Works Information. We will also investigate the benefits of incorporating social media feeds.	In Progress
Subject to adequate funding the coverage of electronic variable message signs (VMS) will be enhanced on the strategic and/or urban networks.	Programmed
PELICAN CROSSINGS	
The Remote Monitoring System (RMS) enables TICC to monitor the operation of pelican crossings from the Control Centre.	
Subject to adequate funding RMS coverage will be extended to the following 10 crossings in Belfast;	
<ul style="list-style-type: none"> • Andersonstown Road at Stockman's Lane 	Programmed
<ul style="list-style-type: none"> • Antrim Road At Baltic Avenue 	Programmed
<ul style="list-style-type: none"> • Antrim Road at Cedar Avenue 	Programmed
<ul style="list-style-type: none"> • Antrim Road at Chichester Road 	Programmed
<ul style="list-style-type: none"> • Antrim Road at Salisbury Avenue 	Programmed
<ul style="list-style-type: none"> • Antrim Road at Serpentine Road 	Programmed
<ul style="list-style-type: none"> • Antrim Road at Willowbank Gardens 	Programmed
<ul style="list-style-type: none"> • Belmont Road at Bathgate Drive 	Programmed

Scheme	Status
<ul style="list-style-type: none"> • Belmont Road at Belmont Church Road • Belmont Road at Wandsworth Gardens • Glen Road at Christian Brothers School 	<p>Programmed</p> <p>Programmed</p> <p>*In Progress</p>
URBAN CLOSED CIRCUIT TELEVISION (CCTV) CAMERAS	
Review CCTV coverage to ensure its continued adequacy and identify camera locations that are in need of upgrade.	Ongoing
TRAFFIC SIGNALS	
We will monitor traffic signal timings to ensure they are appropriate for the prevailing traffic conditions and subject to adequate funding we will upgrade traffic signal equipment where necessary.	Ongoing
MOTORWAY COMMUNICATIONS AND CONTROL	
Utilise TICC's motorway communications & control infrastructure together with CCTV traffic monitoring facilities to efficiently manage traffic on motorways and the Westlink.	Ongoing
Investigate possible enhancements to the Motorway Control Instation system.	Programmed
Audit Motorway Intelligent Transport infrastructure for continued health and safety access compliance.	Programmed
Investigate possible improvements to M1 traffic flow both approaching and leaving the city	Further modelling of traffic flows at Black's Road off-slip.
BUS PRIORITY	
Subject to adequate funding, extend Bus traffic light priority to include the Holywood Road in Belfast.	Programmed
JOURNEY TIME MEASUREMENT	
Subject to adequate funding, extend coverage of Journey Time estimation cameras to provide travel times for Road Users on strategic routes serving Belfast.	Programmed

Scheme	Status
CENTRAL ROAD SAFETY UNIT	
<p>This unit will continue to have a strategic overview of road safety and the analysis of collision data on roads across the Province.</p> <p>Install 2 permanent traffic counting sites.</p>	<p>Ongoing</p> <p>Programmed</p>

* carried over from 2011/12 Programme

6.0 NETWORK MAINTENANCE

Principal Engineer – Colin Sykes (9025 3111) colin.sykes@drdni.gov.uk

He is supported by the following staff:

Support Services Manager- Aidan O’Callaghan (9025 3098)

aidan.o'callaghan@drdni.gov.uk

This team is based at Hydebank and is responsible for general co-ordination, bidding, allocating and monitoring finances, maintenance of safety fences, contract monitoring, statistics and enforcement.



Belfast North Section Engineer – Brian O’Neill (9025 4044)

brian.oneill@drdni.gov.uk

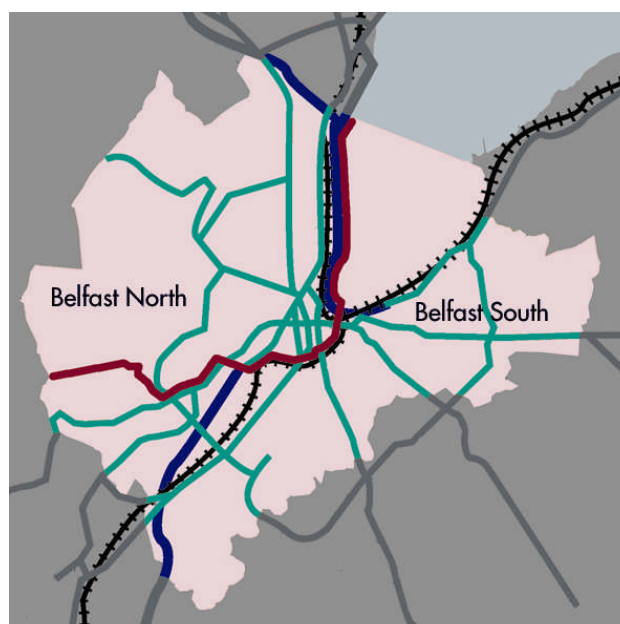
148 – 158 Corporation Street, Belfast, BT1 3DH
This team is responsible for contacts with the public and elected representatives, highway inspections, resurfacing, responsive repairs, routine maintenance, winter gritting, road opening consents and licences, public liability claims and liaison with the service utility companies.



Belfast South Section Engineer - Gareth McKibbin (9025 4609)

gareth.mckibbin@drdni.gov.uk

1a Airport Road, Belfast, BT3 9DY
(As Belfast North)



Network Maintenance

6.1 CARRIAGEWAY RESURFACING

2011/12 Progress Report

Scheme	Status
BELFAST SOUTH	
From April 2011 to March 2012, 23.02km of carriageway has been resurfaced in the Belfast South area. This equates to 96720sqm and includes the schemes listed below.	
Balmoral Avenue – Lisburn Road to Harberton Avenue	Completed
Stockman’s Lane – Boucher Road to Stockman’s Lane Roundabout	Completed
Belmont Road Roundabout	Completed
Wellington Park Avenue	Completed
Wandsworth Gardens	Completed
Lisburn Road – Bradbury Place to Ulsterville Avenue	Completed
Hillside Crescent	Completed
Lancefield Road	Completed
Finaghy Road South – Upper Lisburn Road to Benmore Drive	Completed
Florenceville Avenue / Ailesbury Road (Part)	Completed
Stranmillis Roundabout	Completed
Ravenhill Road – River’s Edge to Delaware Street	Completed
Castlereagh Road – Grand Parade to Houston Park	Completed
Castlereagh Road – Beersbridge Road to Wayland Street	Completed
Castlereagh Street – Albertbridge Road to Beersbridge Road	Completed
Upper Newtownards Road – Hollywood Road to Sandown Road	*Completed
Erris Grove - part	*Completed
Earlswood Road	*Completed
Wolseley Street	*Completed
Ireton Street	*Completed
Mountforde Street	*Completed
Garnerville Road	*In Progress
Ormeau Road – Donegall Pass to Baroda Street	*In Progress
Glen Road – Coolnasilla Park East to Monagh Bypass (including Roundabout)	**Removed from Programme
Rosgoil Park	**Removed from Programme
Finaghy Road South – Benmore Drive to Upper Malone Road	**Removed from Programme

Scheme	Status
BELFAST NORTH	
From April 2011 to March 2012, 22.91 km of carriageway has been resurfaced in the North Belfast area. This equates to approximately 80,000 sqm and includes the completed schemes listed below.	
City Centre Roads in conjunction with NIWater	#Deferred
Alexander Park Avenue	Completed
Crumlin Road – Ardoyne Roundabout to Hesketh Park	Completed
Crumlin Road – Ligoneil Road to Ballysillan Park	Completed
Floral Road	Completed
Lansdowne Road	Completed
Fortwilliam Park	*Completed
Ballyrone Hill	Completed
Gunnell Hill	Completed
Thorburn Road	Completed
Tyndale Drive	Completed
Sheringhurst Park	Completed
Iris Close	Completed
Iris Mews	Completed
Iris Court	Completed
Iris Grove	Completed
Glenside Drive	Completed
Glenside Parade	Completed
Cavehill Road	*Completed
Victoria Street (Waring Street to Gordon Street)	*Completed
Dunbar Link (Gordon Street to Nelson Street)	*Completed
Great Patrick Street (York Street to Nelson Street)	*Completed
Dunbar Link (Nelson Street to Corporation Street)	*Completed
Victoria Street (Corporation Street to Waring Street)	*Completed
High Street (Bridge Street to Lombard Street)	*Completed
Royal Avenue (Castle Place to Rosemary Street)	*Completed
Lombard Street (High Street to Rosemary Street)	*Completed
Rosemary Street (Royal Avenue to Bridge Street)	*Completed

<i>Scheme</i>	<i>Status</i>
Upper Queen Street (STEM works)	*Completed
Woodland Avenue	*Completed
Stanley Court	*Completed
Mulderg Drive	*Completed
Garton Way	*Completed
New Barnsley Green	*Completed
New Barnsley Grove	*Completed
New Barnsley Gardens	*Completed
New Barnsley Parade	*Completed

* additional to Programme

** scheme removed from programme due to proposed works by Northern Ireland Water

scheme now incorporated with STEM proposals for Howard Street / May Street

CARRIAGEWAY RESURFACING

2012/13 Programme of Works

<i>Scheme</i>	<i>Status</i>
BELFAST SOUTH	
University Street – Ormeau Road to Botanic Avenue	Programmed
Garnerville Road	*In Progress
Ormeau Road – Donegall Pass to Baroda Street	*In Progress
BELFAST NORTH	
Garmoyle Street	Programmed
Dock Street	Programmed
Nelson Street	Programmed
May Street (Oxford Street to Donegall Square South - Belfast on the Move works)	Programmed
Donegall Square South (Adelaide Street to Bedford Street – Belfast on the Move works)	Programmed
Howard Street (Bedford Street to Fisherwick Place – Belfast on the Move works)	Programmed

* carried over from 2011/12 Programme

6.2 FOOTWAY RESURFACING

2011/12 Progress Report

Scheme	Status
BELFAST SOUTH	
From April 2011 to March 2012, 7.19 km of footway has been resurfaced in the Belfast South area. This includes the schemes listed below.	
Balmoral Avenue – Lisburn Road to Harberton Avenue	Completed
Stockman's Lane – Boucher Road to Stockman's Lane Roundabout	Completed
Wellington Park Avenue	Completed
Wandsworth Gardens	Completed
Hillside Crescent	Completed
Lancefield Road	Completed
Finaghy Road South – Upper Lisburn Road to Benmore Drive	Completed
Florenceville Avenue / Ailesbury Road (Part)	Completed
Ravenhill Road – River's Edge to Delaware Street	Completed
Erris Grove	*Completed
Black's Road - Part	*Completed
Ringford Park - Part	*Completed
Earlswood Road	*Completed
Woleseley Street	*Completed
Ireton Street	*Completed
Garnerville Road	In Progress
Glen Road – Coolnasilla Park East to Monagh Bypass (including Roundabout)	**Removed from Programme
BELFAST NORTH	
From April 2011 to March 2012, 8.6 km of footway has been resurfaced in the North Belfast Belfast area. This includes the completed schemes listed below.	
Alexander Park Avenue	Completed
Castle Avenue	Completed
Crumlin Road	Completed
Inver Avenue	Completed
Lyndhurst Park	Completed
Rockmore Road	Completed
Dunlambert Park	Completed

<i>Scheme</i>	<i>Status</i>
Dunlambert Avenue	Completed
Dunlambert Gardens	Completed
Pinkerton Walk	Completed
Glenside Drive	Completed
Glenside Parade	Completed
Upper Whiterock Road	*Completed
Townsend Street	*Completed
Lyndhurst Parade	*Completed
Dayton Street	*Completed
Cavehill Road	*Completed
Glenbryn Park	*Completed
Glenbryn Drive	*Completed

* additional to Programme

** scheme removed from programme due to proposed works by Northern Ireland Water

FOOTWAY RESURFACING

2012/13 Programme of Works

<i>Scheme</i>	<i>Status</i>
BELFAST SOUTH	
University Street – Ormeau Road to Botanic Avenue	Programmed
Garnerville Road	*In Progress
BELFAST NORTH	
Prestwick Park	Completed
Coombehill Park	Programmed
Blackmountain Way	Programmed

* carried over from 2011/12 Programme

6.3 DRAINAGE

2011/12 Progress Report

Scheme	Status
BELFAST SOUTH	
Finaghy crossroads	Completed
Knock Road	Completed
Orangefield Drive South	Completed
Houston Park	Completed
Cresslough Park	Completed
Mooreland Park	*Completed
Old Coach Gardens	*Completed
Stoney Road	*Completed
Dee Street	*Completed
BELFAST NORTH	
Wolfend Way	Completed
Dock Street	Completed
Whitewell Mews	Completed
Pineview Park	Completed
Upper Cavehill Road	*Completed
Ballygomartin Road at Springmartin Road	*Completed
Corporation Street at Corporation Square	*Completed
Crumlin Road approx 100m above Upper Hightown Road	*Completed
Upper Hightown Road	*Completed
Bedford Street at Clarence Street West	*Completed
Ligoneil Road opposite White Brae Lane	*Completed

* additional to Programme

DRAINAGE**2012/13 Programme of Works**

<i>Scheme</i>	<i>Status</i>
BELFAST SOUTH	
Upper Lisburn Road at Kingsway	Programmed
BELFAST NORTH	
Cromac Street between Ormeau Avenue and Hamilton Street	Programmed
Ormeau Avenue	Programmed
Shaftesbury Square	Programmed

6.4 CARRIAGEWAY REFURBISHMENT**2011/12 Progress Report**

<i>Scheme</i>	<i>Status</i>
BELFAST SOUTH	
From April 2011 to March 2012, 1.77 km of carriageway has been refurbished in the South Belfast area. This equates to approximately 6250 sqm and includes the completed schemes listed below.	
Beersbridge Road / Bloomfield Road / Bloomfield Avenue Junction	*Completed
Kings Road / Kingsdale Park / Gilnahirk Road Junction	*Completed
Larkfield Road	Completed
Lake Glen Drive	Completed
Madrid Street	*Completed
Severn Street – Part	*Completed
Hornby Street	*Completed
Palmerston Road – Part	*Completed
Chlorine Gardens – Part	*Completed
Finnis Close	*Completed
Benwee Park	*Completed
Willowholme Parade	*Completed
Willowholme Crescent	*Completed
Ranfurly Drive	*Completed
Ravenhill Road – Part	*Completed
St. Leonards Street – Part	*Completed

Scheme	Status
Moltke Street – Part	*Completed
Glenveagh Drive	*Completed
Stoney Road at junction with Upper Newtownards Road	*Completed
Park Avenue – Part	*Completed
Kyle Street – Part	*Completed
Solway Street	*Completed
Elmwood Mews – Part	*Completed
Bunbeg Park	*Completed
Ulsterville Place – Part	*Completed
Rosetta Parade	*Completed
BELFAST NORTH	
From April 2011 to March 2012, 1.1 km of carriageway has been refurbished in the North Belfast area. This equates to approximately 4,500 sqm and includes the completed schemes listed below.	
Agnes Street	*Completed
Sunninghill Drive	*Completed
Sunninghill Gardens	*Completed
Sunninghill Park	*Completed
Moyard Park	*Completed

* additional to Programme

6.5 SURFACE DRESSINGS

2011/12 Progress Report

Scheme	Status
BELFAST SOUTH	
From April 2011 to March 2012, 1900 sqm of surface dressing has been carried out in the South Belfast area. This includes the scheme listed below	
Diamond Avenue	Completed
Malone Meadows	Completed

6.6 PUBLIC REALM Streets Ahead Project (DSD)

2011/12 Progress Report

The first phase of The Belfast Streets Ahead project funded by DSD, which aimed to improve the public areas of Belfast City Centre came to an end in July 2012. This work involved the reconstruction of streets with granite paving, the provision of new street furniture, lighting, signs and landscaping and also included some public art and sculpture. Future maintenance of these streets now rests with Roads Service.

Streets Ahead Project (DSD) 2011/12 Progress Report

Scheme	Status
BELFAST NORTH	
Belfast City Centre (maintenance work to footways Donegall Sq West, Wellington Place and Upper Queen Street)	*Completed

* additional to Programme

Streets Ahead Project (DSD)

2012/13 Programme of Works

Scheme	Status
BELFAST SOUTH	
Bank Square proposals	At Planning stage

6.7 LIAISON WITH UTILITIES

2011/12 Progress Report

Scheme	Status
WATER SERVICE	
Roads Service staff will continue to work closely with NI Water and their Consultants on the major upgrade of NIW mains infrastructure throughout Belfast and in particular North Belfast.	In Progress
PHOENIX GAS	
No major infrastructure builds notified. Service connections for new customers are likely.	Ongoing

Scheme	Status
VIRGIN MEDIA	
No major infrastructure builds notified. Service connections for new customers are likely.	Ongoing
CABLE & WIRELESS	
No major infrastructure builds notified. Service connections for new customers are likely.	Ongoing
POWER NI	
No major infrastructure builds notified. Service connections for new customers are likely.	Ongoing
BT	
No major infrastructure builds notified. Service connections for new customers are likely.	Ongoing
EIRCOM	
No major infrastructure builds notified. Service connections for new customers are likely.	Ongoing
HIBERNIA ATLANTIC	
No major infrastructure builds notified. Service connections for new customers are likely.	Ongoing

LIAISON WITH UTILITIES

2012/13 Programme of Works

Scheme	Status
WATER SERVICE	
Roads Service staff will continue to work closely with NI Water and their Consultants on the major upgrade of NIW mains infrastructure throughout Belfast and in particular North Belfast.	In Progress
PHOENIX GAS	
No major infrastructure builds notified. Service connections for new customers are likely.	In Progress
VIRGIN MEDIA	
No major infrastructure builds notified. Service connections for new customers are likely.	In Progress
CABLE & WIRELESS	
No major infrastructure builds notified. Service connections for new customers are likely.	In Progress
POWER NI	
No major infrastructure builds notified. Service connections for new customers are likely.	In Progress

Scheme	Status
BT	
No major infrastructure builds notified. Service connections for new customers are likely.	In Progress
EIRCOM	
No major infrastructure builds notified. Service connections for new customers are likely.	In Progress
HIBERNIA ATLANTIC	
No major infrastructure builds notified. Service connections for new customers are likely.	In Progress

7.0 NETWORK PLANNING

Principal Engineer – Philip Robinson (9025 3080) philip.robinson@drdni.gov.uk

He is supported by the following staff:

Development Control Team 1 - Gerry Morgan (9025 3091)
gerry.morgan@drdni.gov.uk

This team deals with development control for Belfast and Carrickfergus Council Areas. Gerry is also responsible for private street determinations, bonds and adoption certificates for the Division.



Development Control Team 2- Sid Stevenson (9025 3588)
sid.stevenson@drdni.gov.uk

This team deals with development control for the Lisburn, and North Down Council Areas. Sid also provides specialist advice on development control issues.



Development Control Team 3 - Gabriel Doherty (9025 3154)
gabriel.doherty@drdni.gov.uk

This team deals with development control for Newtownabbey and Castlereagh Council areas. Gabriel also manages the review of Transport Assessments associated with planning applications and provides specialist advice in this area.



7.1 ADOPTIONS

Adoptions completed from last spring report

Location	Length Adopted (M)
Andrew's Court	105 metres of shared surface carriageway with 2 turning heads and a 1 metre wide service strip.
Antrim Close/Antrim Mews	Antrim Close: 160 metres of traditional carriageway and associated footways, (including turning head), plus 87 square metres of parking. Antrim Mews: 10 metres of traditional carriageway and associated footways. 83 metres of shared surface carriageway and associated service strips, (including turning head), plus 129 square metres of parking and 24 metres of remote footway.
Antrim Street/Stanhope Street/Wall Street	Antrim Street: 51 metres of traditional carriageway with associated footways Stanhope Street: 170 metres of traditional carriageway with turning head and associated footways. Wall Street: 51 metres of footway plus 5 square metres of carriageway.
Aughrim Park/Blythe Street	Aughrim Park: 5 square metres of paved landscaping at end of cul-de-sac between raised planter and house no.19. Blythe Street: 43 square metres of paved landscaping at rear of 27 & 29 Blythe Street, Including 2 no. tree pits with mature trees.
Ballygomartin Road	Two portions of footway associated with widening to Tesco's supermarket car park.
Bute Street/Grove Street	Bute Street: 15 metres of traditional carriageway with associated footways and 52 square metres of end-on parking. Grove Court: 46 metres of traditional carriageway with turning head and associated footways.
Catherine Court	120m of shared surface carriageway with turning head and a 2m service strip throughout.
Cutter's Lane	8 metres of traditional carriageway and associated footways plus 79 metres of shared surface carriageway with turning head, service strip and 80 square metres of end-on parking.
Deerpark Mews	90 metres of shared surface carriageway with turning head and service strip plus 25 metres of footway.
Dunmurry Lane (No. 59)	57 metres of footway.
Forfar Way	Forfar Way: 95 metres of traditional carriageway with turning head and associated footways. Forfar Lane: 31 Metres of traditional carriageway with turning head and associated footways.
Glanworth Gardens	30 square metres of new footway.
Glen Road/Hamill Park	Glen Road: 30 metres of footway. Hamill Park: 64 metres of traditional carriageway with turning head, 68 metres of footway and 35 metres of buffer strip.

Location	Length Adopted (M)
Harland Drive	Harland Drive: 107 metres of traditional carriageway with turning head plus 197 metres of footway and 289 square metres of paved landscape. Harland Close: 40 metres of traditional carriageway with 84 metres of footway and 252 square metres of paved landscaping. Fraser Pass: 269 square metres of traditional carriageway and 45 metres of footway. Convention Court: 84 square metres of traditional carriageway and 42 metres of footway.
Ivan Close	87 metres of traditional carriageway with turning head plus associated footways.
Kensington Road	36 metres of footway.
Linfield Road	32m of footway at three sites: - North Side of parking area, and - South side of parking area at Linfield Gardens (Nos 12 – 20) - Linfield Road:Rear of “two car” size lay-by.
Meadow Place/Spamount Street	Meadow Place: 55 linear metres of traditional carriageway with turning head and associated footway. Spamount Street: 96 square metres of lay-by parking plus 84 square metres of footway Remote: 83 square metres of footpath linking Meadow Place and Spamount Street.
Mill Avenue (Enforcement site)	40 metres of new footway plus 5 square metres of new carriageway surface due to kerb realignment. 94 metres of traditional carriageway and associated footways by-passing existing sharp bend. Plus 18 metres of link road, also of traditional design with footways.
Mountjoy Street	127 metres of new footway.
Nelson Square/Nelson Court (Enforcement site)	Nelson Square: 82 linear metres of shared surface carriageway, 42 linear metres of footway, 45 linear metres of service strip and 30 metres of buffer strip at turning head. Nelson Court: 126 metres of traditional carriageway and associated footways with turning head. Canmore Street: 191 metres of new footway
Ormonde Crescent	Ormonde Crescent: 40 metres of traditional carriageway and associated footways plus 110 metres of shared surface carriageway with 92 square metres of lay-by parking and 114 metres of service strip. Ormonde Gardens: 30 metres of new footway.
Park Avenue	38.5 metres of new footway surface resulting from widening of existing footway
Richview Street (Art 9)	Rear entry at Richview Street: From the start of the entry at rear of no. 18 Richview Street for a distance of 35 metres to the boundary between 4B and 4C Richview Street, excluding the steps to the rear of 16 & 18 Richview Street.

Location	Length Adopted (M)
Ross Mill Avenue	Ross Mill Avenue: 179 metres of traditional carriageway and associated footway with 635 square metres of lay-by parking. (Rear most 200mm of footways to remain private where indicated with red stone chips). Odessa Street: 90m of new footway and 145 square metres of lay-by parking.
St Anne's, Black's Road	Blacks Road: 553 square metres of widened carriageway incorporating sight splays. Bus turning circle: 40 metres of traditional carriageway and associated footways. St Anne's Close: 10 metres of traditional carriageway and footways at bellmouth, plus 46 metres of shared surface carriageway with associated turning head. St Anne's Crescent: 101 metres of traditional carriageway and associated footways plus 80 square metres of parking lay-by. St Anne's Lane: 19 Metres of traditional carriageway and footways at bellmouth. 60 metres of shared surface carriageway with associated turning head, service strips and sight splays. Also 175 square metres of parking lay-by. St Anne's Road: 378 metres of traditional carriageway and associated footways and sight splays, plus 80 square metres of parking lay-by.
Sliabh Dubh	Sliabh Dubh Glen: 50 metres of traditional carriageway and associated footways with turning head and 317 square metres of end-on parking. Also 76 metres of remote footway. Sliabh Dubh Lane: 51 metres of shared surface carriageway with turning head, service strips and 90 metres of end-on parking. Sliabh Dubh Path: 45 metres of shared surface carriageway and service strips Sliabh Dubh View: 731 metres of traditional carriageway and associated footways plus 102 square metres of end-on parking. Sliabh Dubh Walk: 9 metres of traditional carriageway and associated footways, plus 59 metres of shared surface carriageway with turning head, service strips and 101 square metres of end-on parking.
Summerhill Court	Summerhill Court: 70 square metres of carriageway, 118 square metres of footway, 33 square metres of end-on parking and 5 square metres of buffer strip. Avoca Street: 48 square metres of footway. Manor Street: 115 square metres of footway
Torrens Drive	Torrens Drive: 45 metres of traditional carriageway with associated footways and 9 metres of turning head with footway. Torrens Road: 202 metres of footway plus 65 square metres of lay-by parking.
Wheatfield Court	52 metres of traditional carriageway with turning head, associated footways and 45 square metres of end-on parking.
Wolfhill Manor (Enforcement site)	324 metres of traditional carriageway and associated footways.

7.2 PLANNING APPLICATIONS

Planning Service already consults directly with the Council regarding planning applications which they receive in the Belfast Area. Roads Service Development Control teams advise Planning Service on the roads and transportation issues associated with both major and minor planning applications.